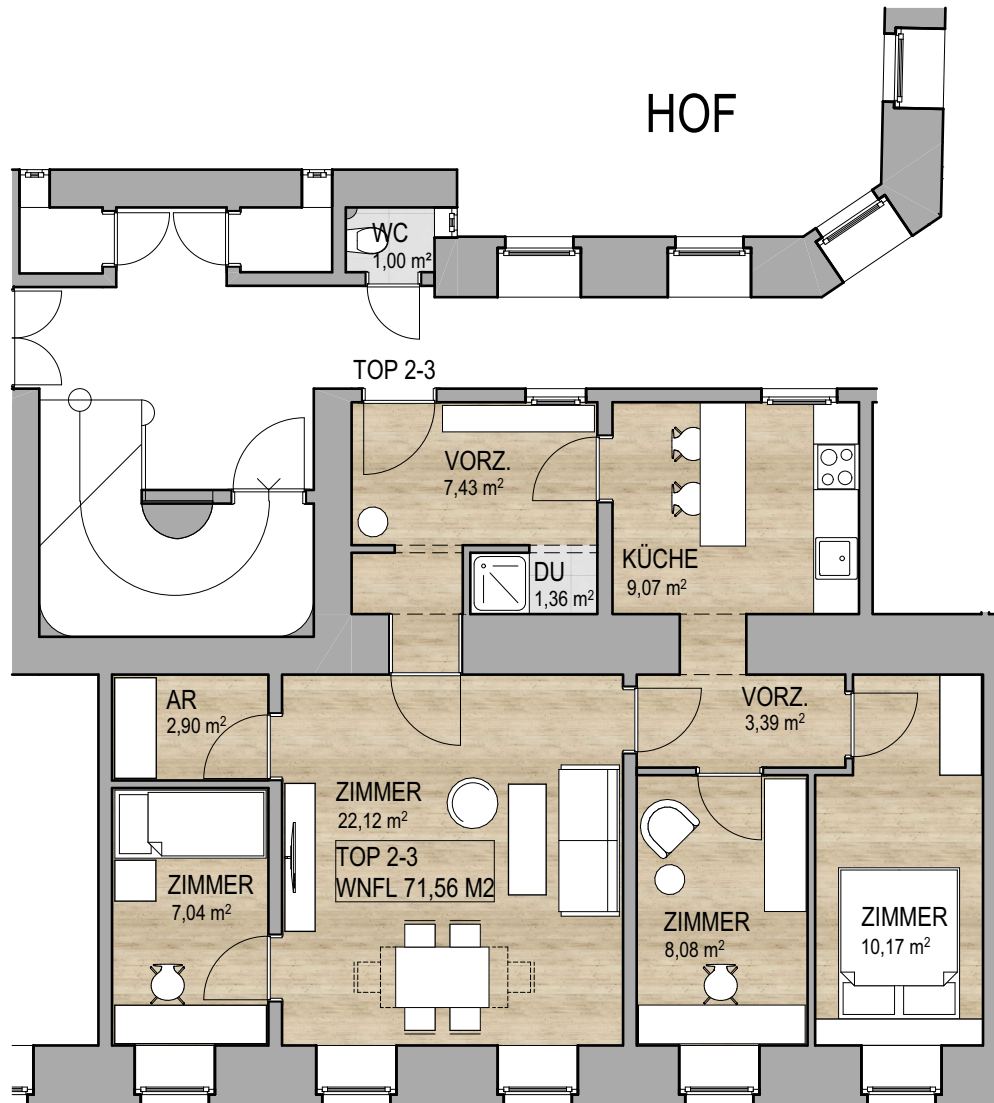


EIGENTUMSWOHNUNG

MARKHOFGASSE 2, 1030 WIEN



MARKHOFGASSE

TOP 2-3

ERDGESCHOSS

WNFL
71,56 m²

| | |
|---------|----------------------|
| VORZ. | 7,43 m ² |
| DU | 1,36 m ² |
| AR | 2,90 m ² |
| KÜCHE | 9,07 m ² |
| VORZ. | 3,39 m ² |
| ZIMMER | 7,04 m ² |
| ZIMMER | 8,08 m ² |
| ZIMMER | 22,12 m ² |
| ZIMMER | 10,17 m ² |
| GANG WC | 1,00 m ² |

LAGEPLAN

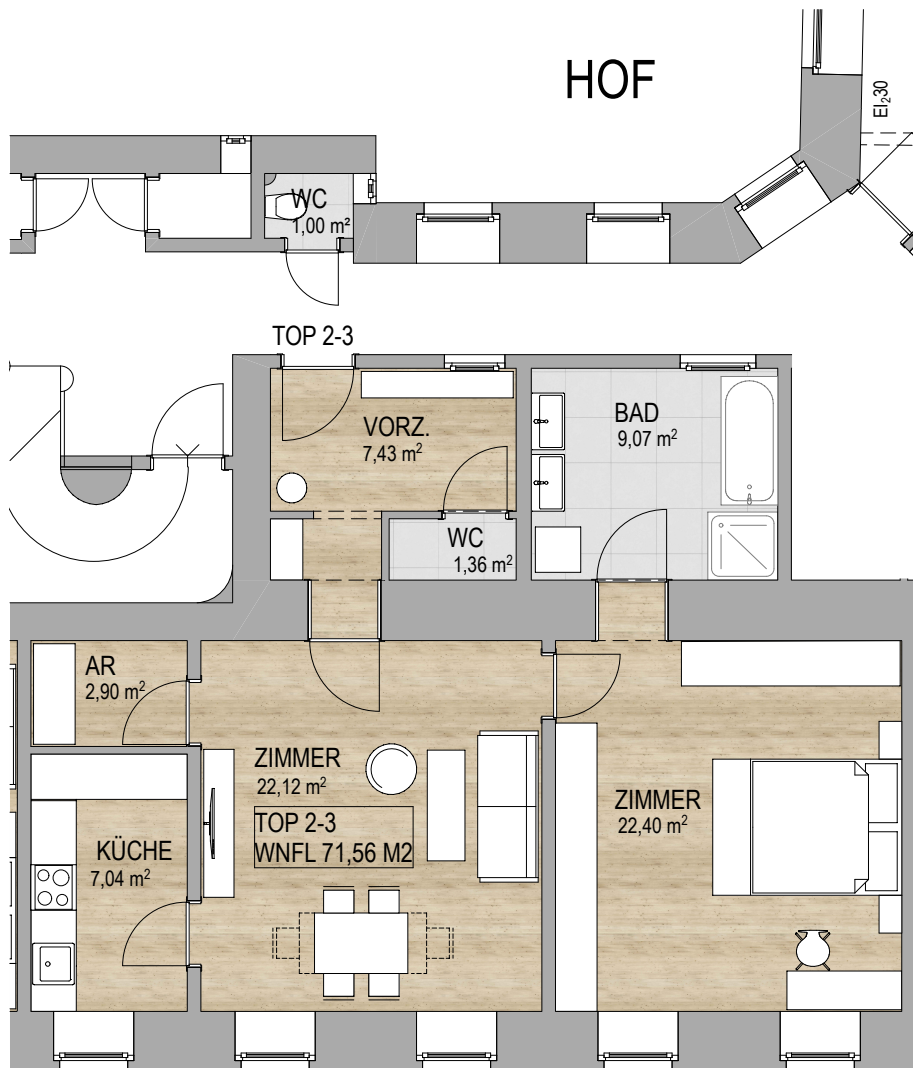
ERDGESCHOSS



Top 2-3:

Variante A - 2 Zimmer plus vergrößertes Bad und WC innerhalb der Wohnung

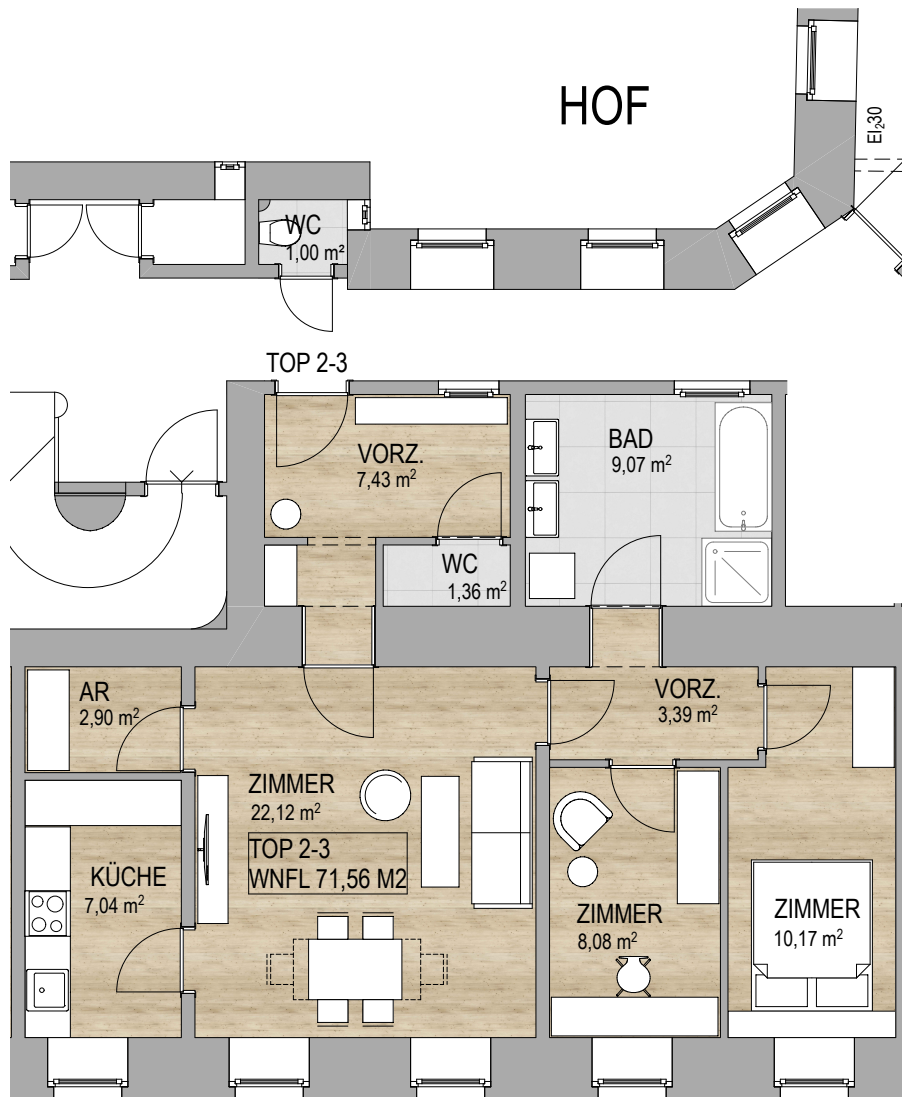
(dabei handelt es sich lediglich um einen Vorschlag wie sich der Grundriss adaptieren ließe)



Top 2-3:

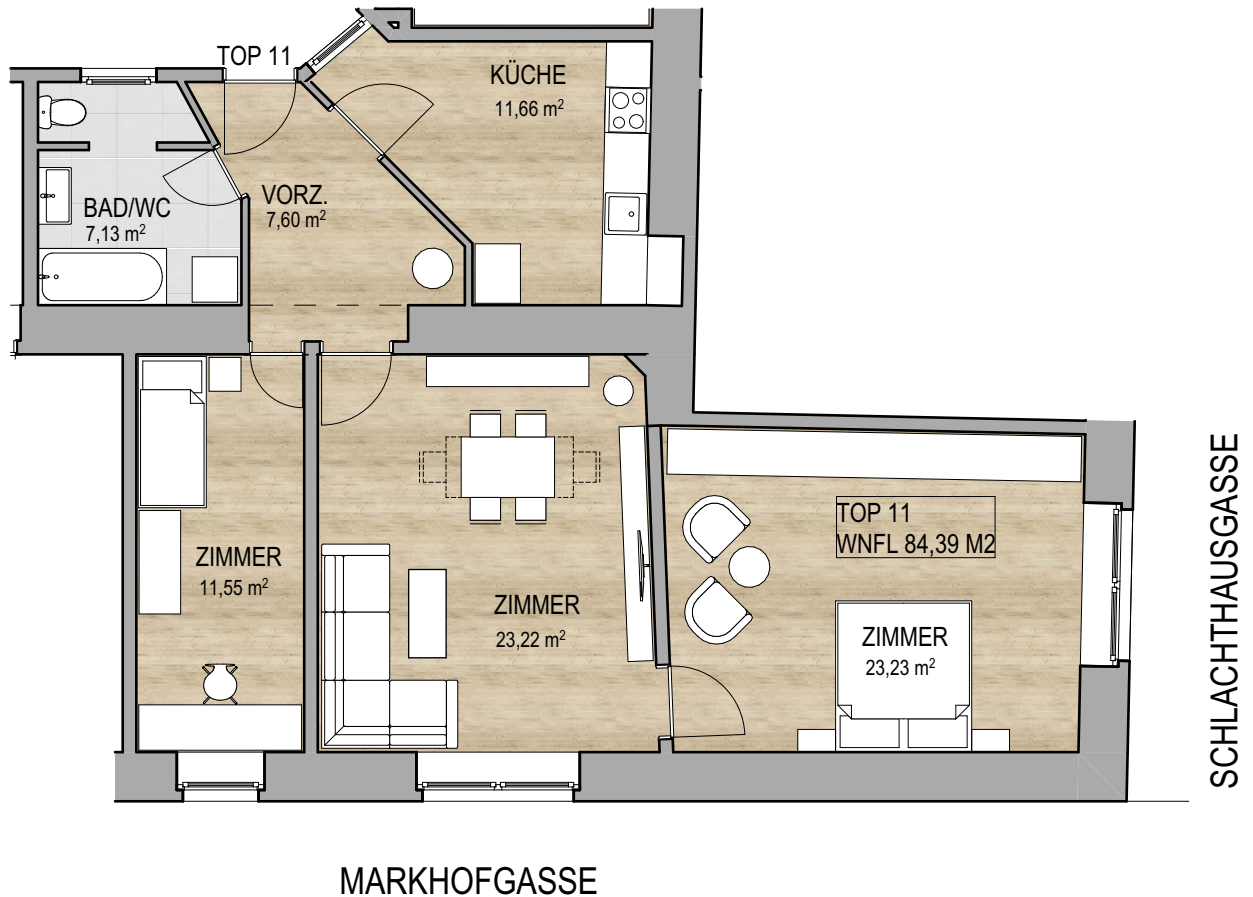
Variante B- 3 Zimmer plus vergrößertes Bad und WC innerhalb der Wohnung

(dabei handelt es sich lediglich um einen Vorschlag wie sich der Grundriss adaptieren ließe)



EIGENTUMSWOHNUNG

MARKHOFGASSE 2, 1030 WIEN



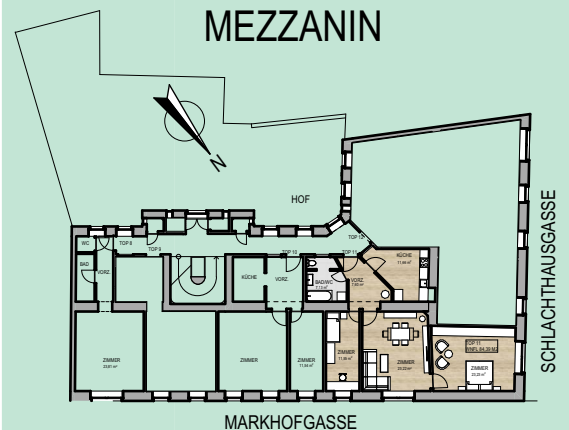
TOP 11

MEZZANIN

| | |
|--------|----------------------|
| WNFL | 84,39 m ² |
| VORZ. | 7,60 m ² |
| KÜCHE | 11,66 m ² |
| BAD/WC | 7,13 m ² |
| ZIMMER | 11,55 m ² |
| ZIMMER | 23,22 m ² |
| ZIMMER | 23,23 m ² |

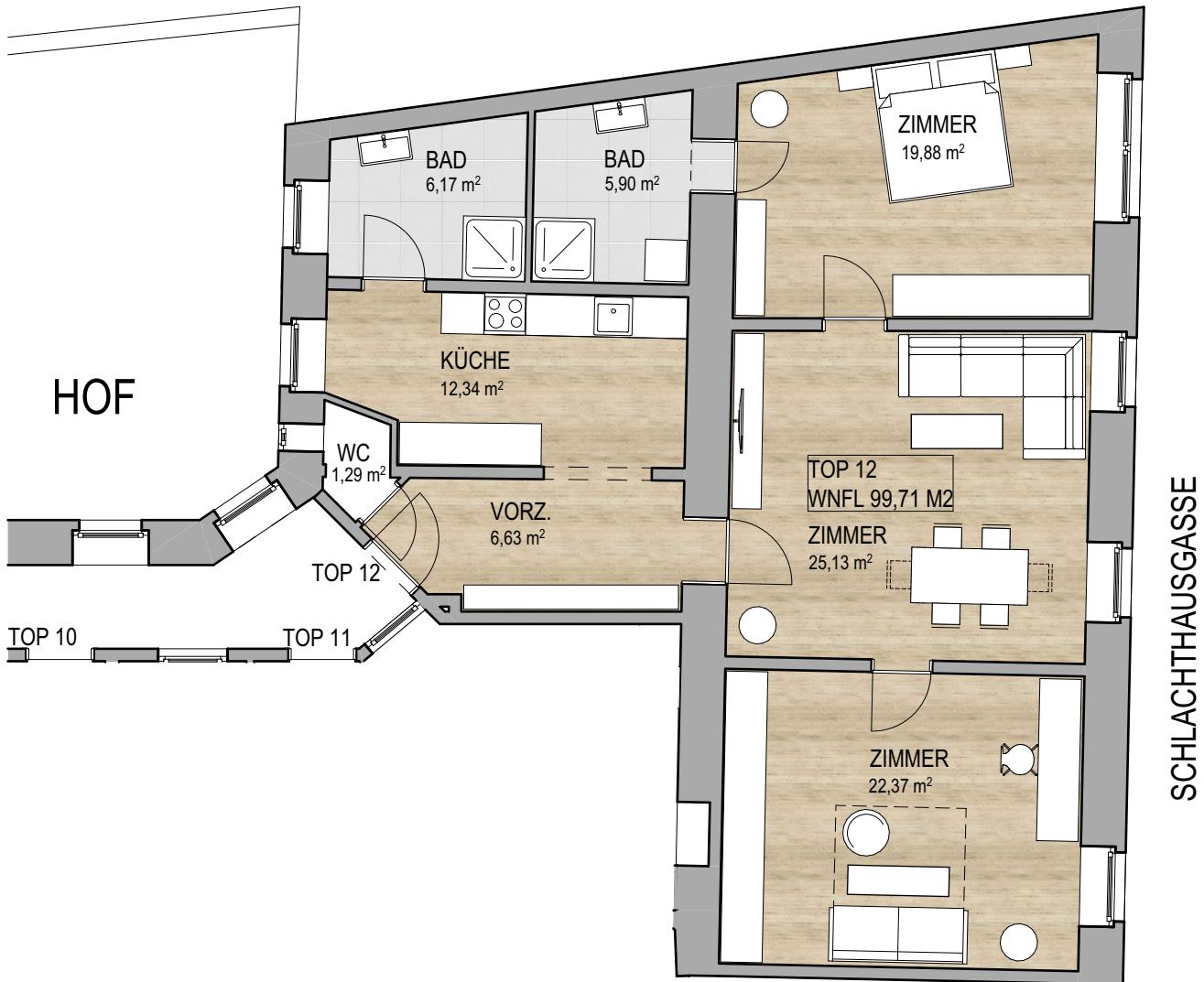
LAGEPLAN

MEZZANIN



EIGENTUMSWOHNUNG

MARKHOFGASSE 2, 1030 WIEN



TOP 12

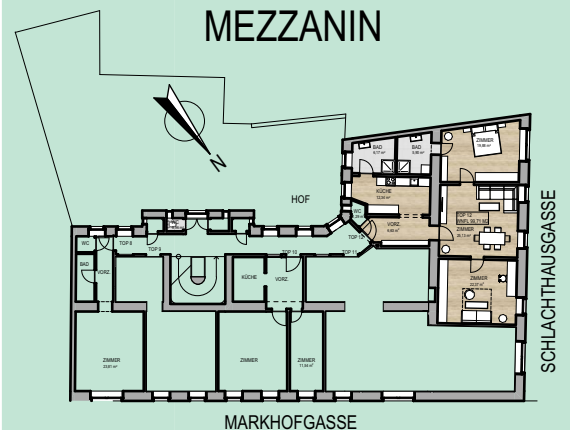
MEZZANIN

WNFL
99,71 m²

| | |
|--------|----------------------|
| VORZ. | 6,63 m ² |
| KÜCHE | 12,34 m ² |
| WC | 1,29 m ² |
| BAD | 6,17 m ² |
| BAD | 5,90 m ² |
| ZIMMER | 19,88 m ² |
| ZIMMER | 25,13 m ² |
| ZIMMER | 22,37 m ² |

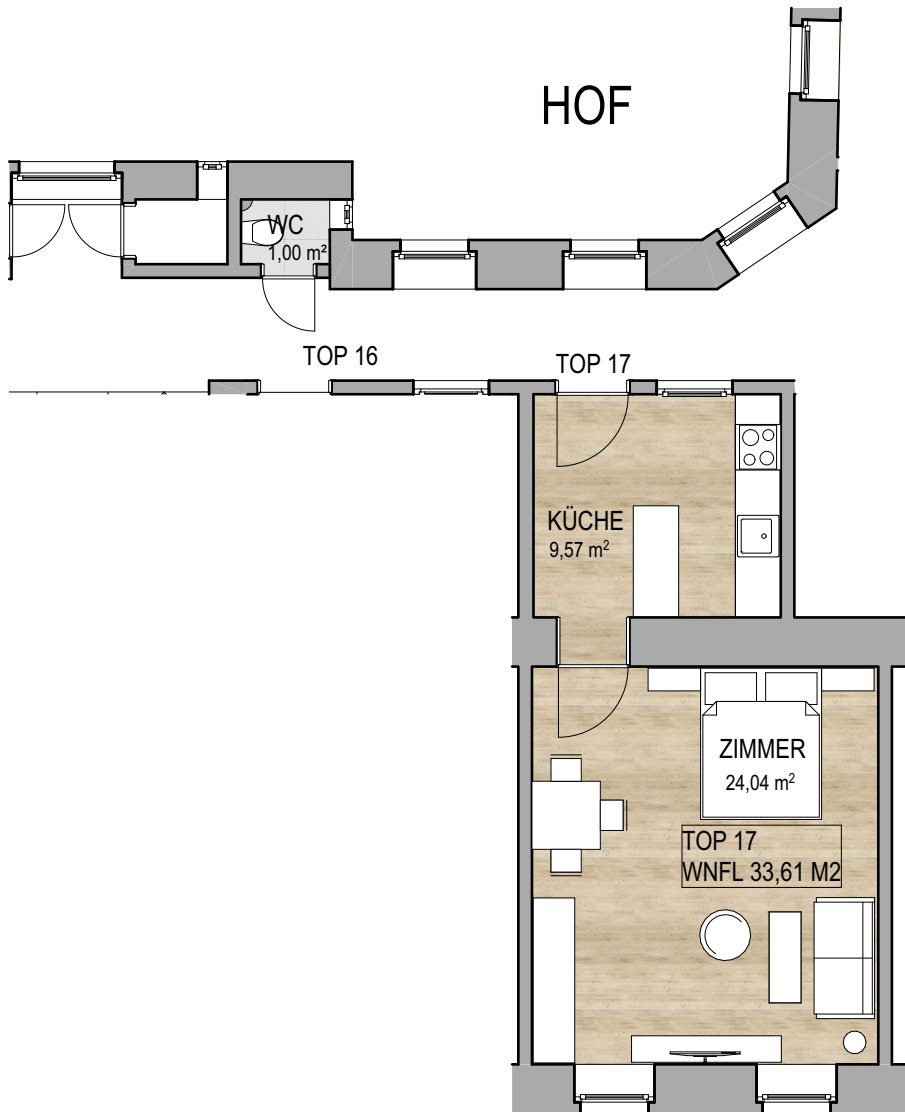
LAGEPLAN

MEZZANIN



EIGENTUMSWOHNUNG

MARKHOFGASSE 2, 1030 WIEN



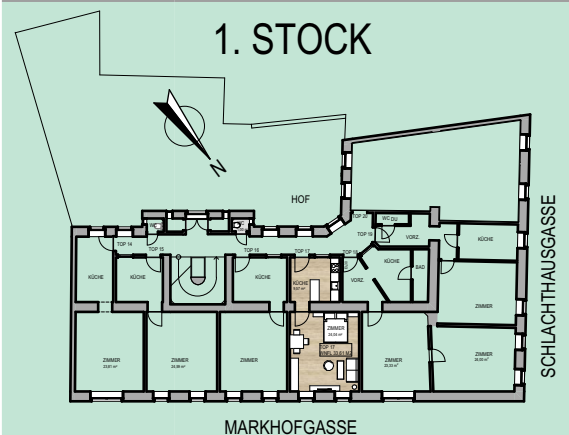
TOP 17 1. STOCK

WNFL
33,61 m²

KÜCHE 9,57 m²
ZIMMER 24,04 m²
GANG WC 1,00 m²

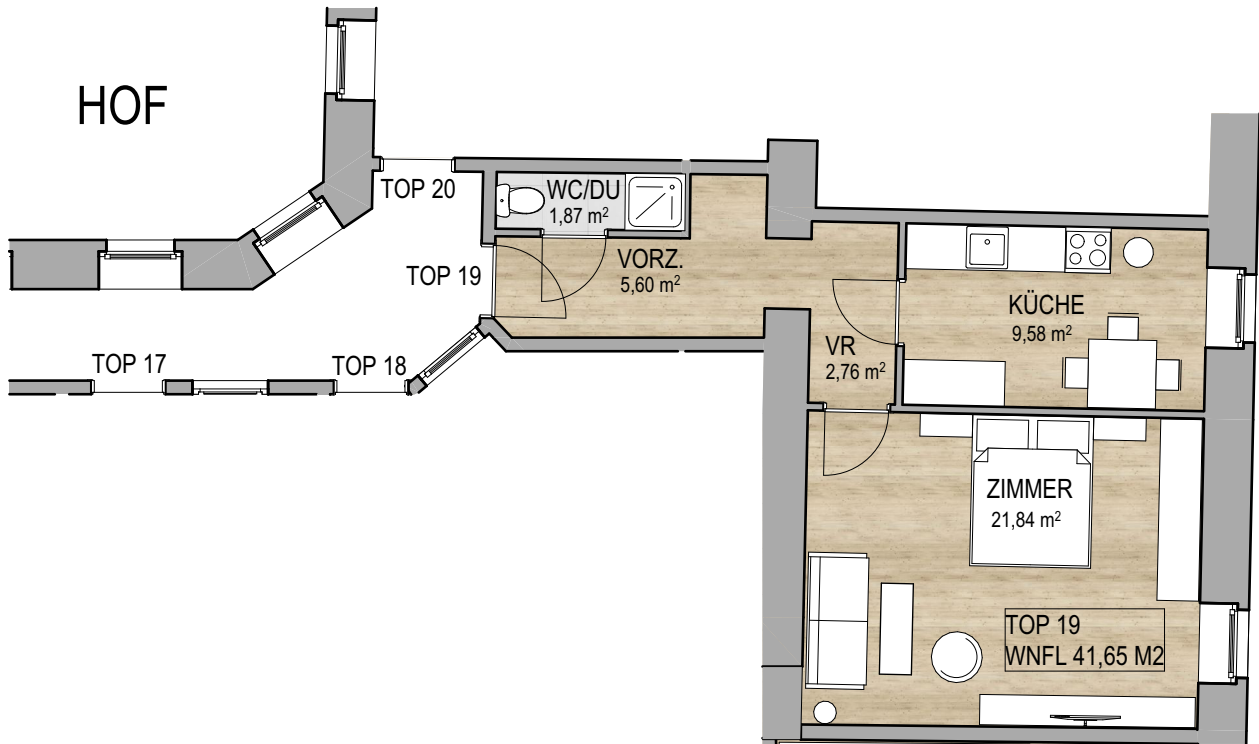
LAGEPLAN

1. STOCK



EIGENTUMSWOHNUNG

MARKHOFGASSE 2, 1030 WIEN



MARKHOFGASSE

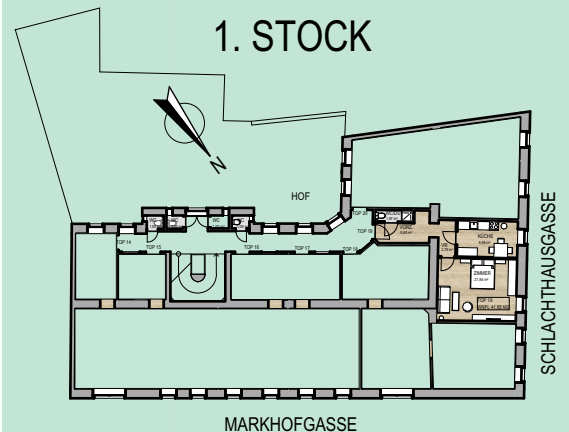
TOP 19 1. STOCK

WNFL
41,65 m²

| | |
|---------|----------------------|
| VORZ. | 5,60 m ² |
| VR. | 2,76 m ² |
| KÜCHE | 9,58 m ² |
| WC / DU | 1,87 m ² |
| ZIMMER | 21,84 m ² |

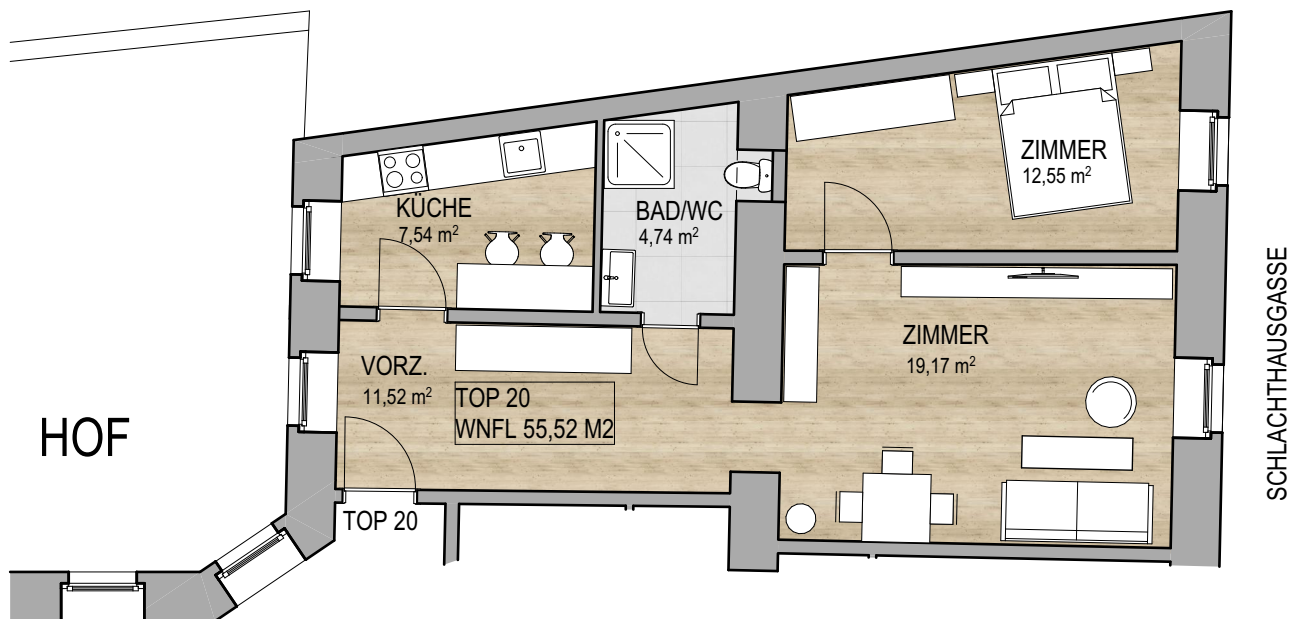
LAGEPLAN

1. STOCK



EIGENTUMSWOHNUNG

MARKHOFGASSE 2, 1030 WIEN

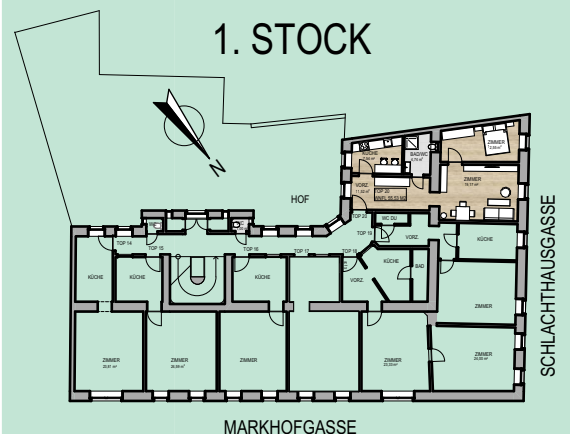


TOP 20 1. STOCK

| | | |
|----------|--------|----------|
| WNFL | VORZ. | 11,52 m² |
| 55,52 m² | KÜCHE | 7,54 m² |
| | BAD/WC | 4,74 m² |
| | ZIMMER | 19,17 m² |
| | ZIMMER | 12,55 m² |

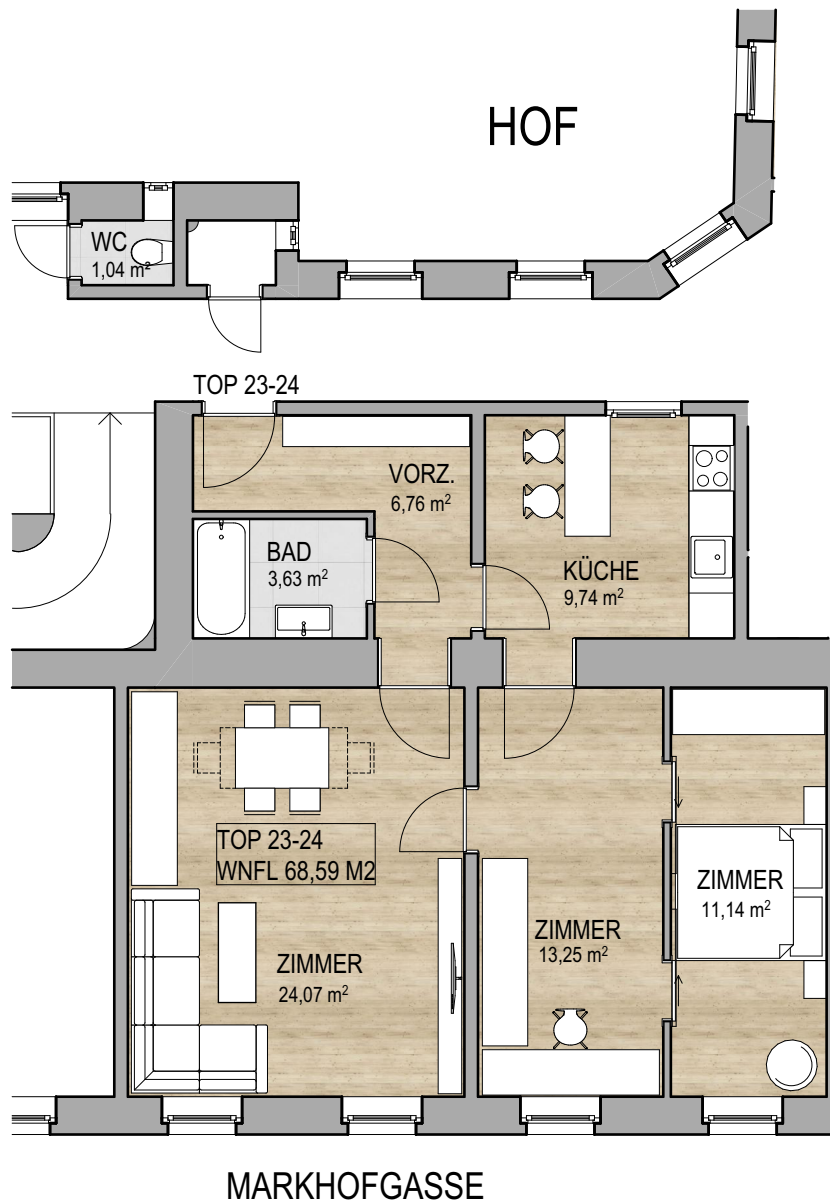
LAGEPLAN

1. STOCK



EIGENTUMSWOHNUNG

MARKHOFGASSE 2, 1030 WIEN



TOP

2. STOCK

23-24

WNFL
68,59 m²

| | |
|---------|----------|
| VORZ. | 6,76 m² |
| KÜCHE | 9,74 m² |
| BAD | 3,63 m² |
| ZIMMER | 24,07 m² |
| ZIMMER | 13,25 m² |
| ZIMMER | 11,14 m² |
| GANG WC | 1,04 m² |

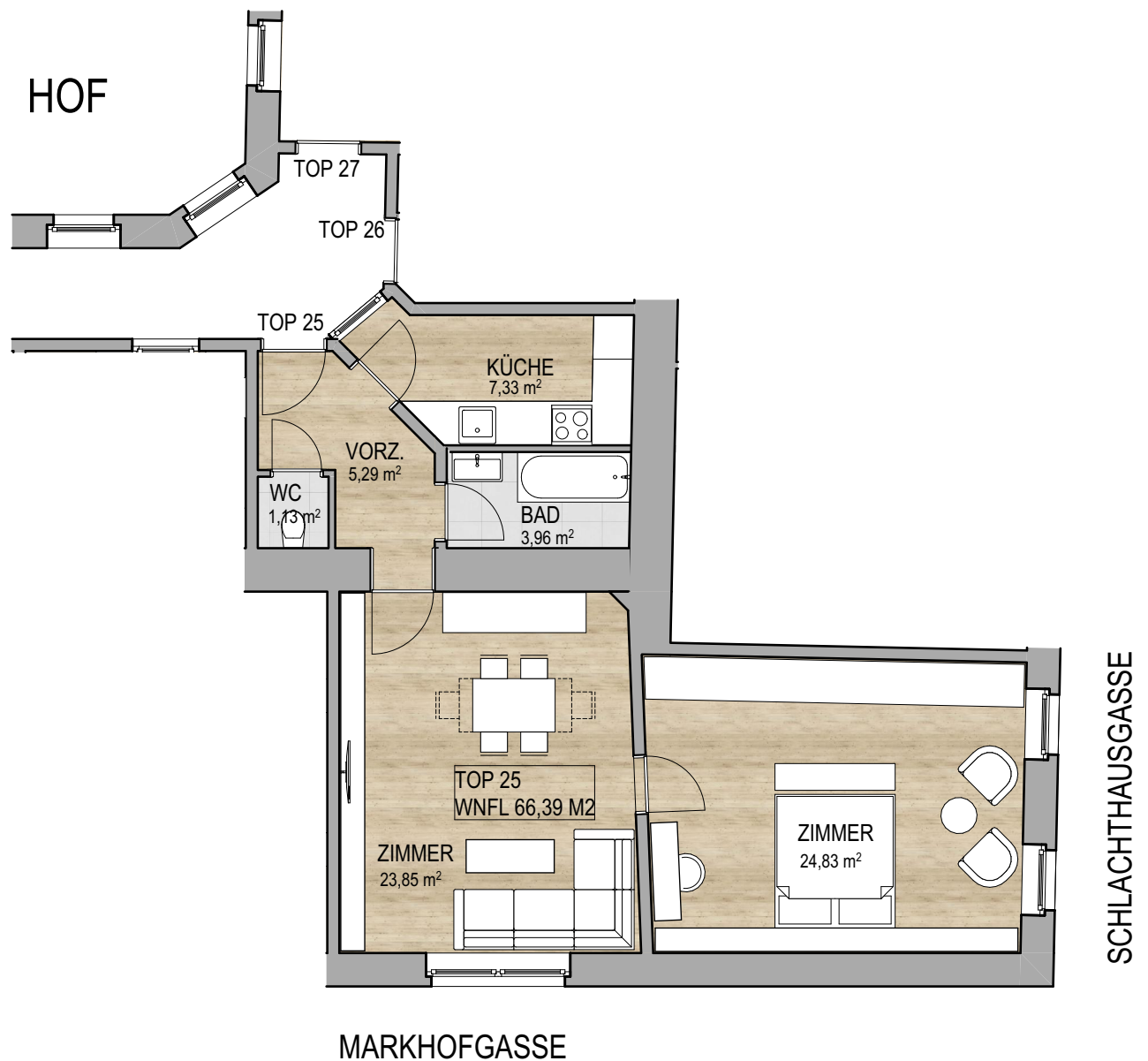
LAGEPLAN

2. STOCK



EIGENTUMSWOHNUNG

MARKHOFGASSE 2, 1030 WIEN



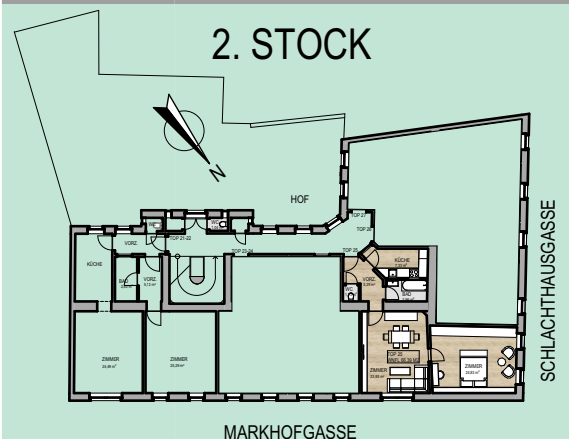
TOP 25 2. STOCK

WNFL
66,39 m²

| | |
|--------|----------------------|
| VORZ. | 5,29 m ² |
| KÜCHE | 7,33 m ² |
| BAD | 3,96 m ² |
| WC | 1,13 m ² |
| ZIMMER | 23,85 m ² |
| ZIMMER | 24,83 m ² |

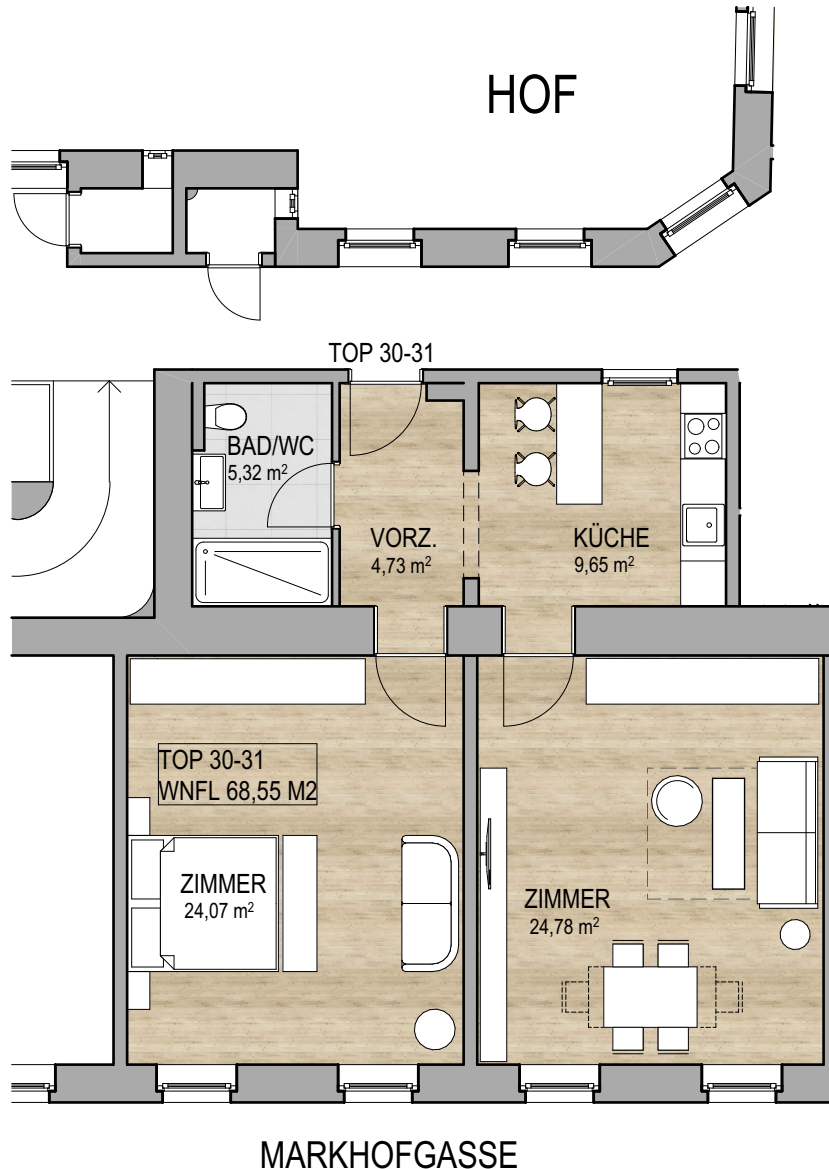
LAGEPLAN

2. STOCK



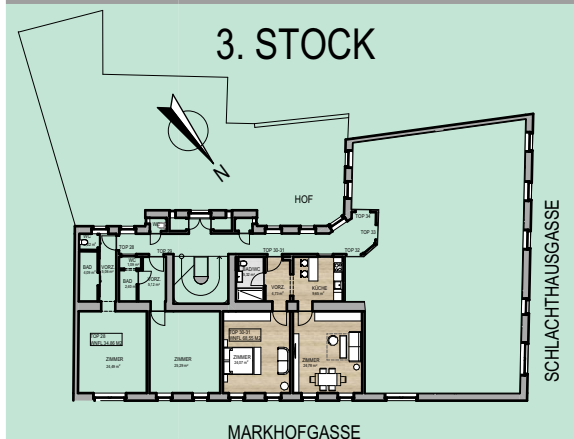
EIGENTUMSWOHNUNG

MARKHOFGASSE 2, 1030 WIEN



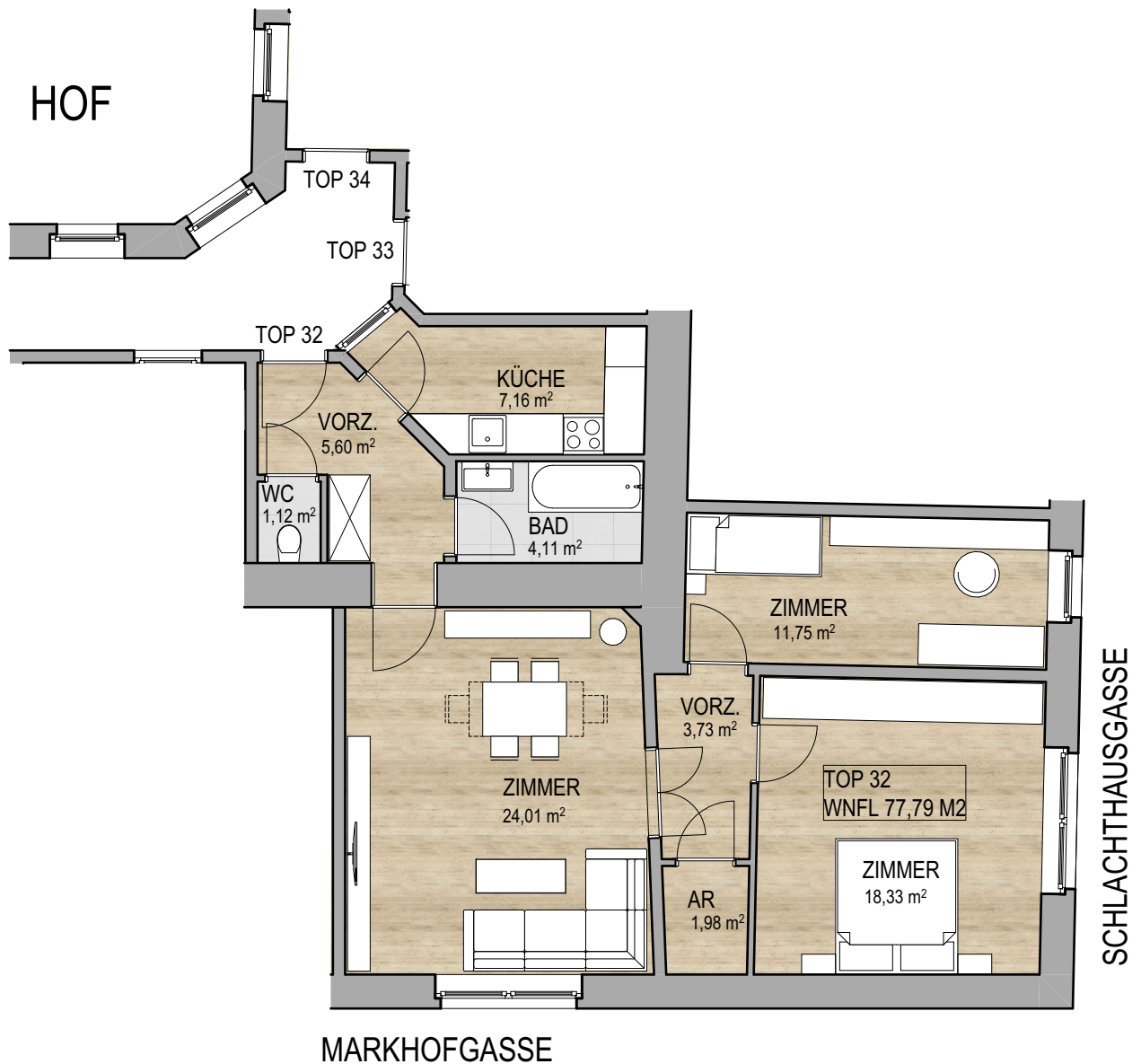
| TOP | 3. STOCK |
|----------------------|----------------------|
| 30-31 | |
| WNFL | |
| 68,55 m ² | |
| VORZ. | 4,73 m ² |
| KÜCHE | 9,65 m ² |
| BAD/WC | 5,32 m ² |
| ZIMMER | 24,07 m ² |
| ZIMMER | 24,78 m ² |

LAGEPLAN



EIGENTUMSWOHNUNG

MARKHOFGASSE 2, 1030 WIEN



TOP 32

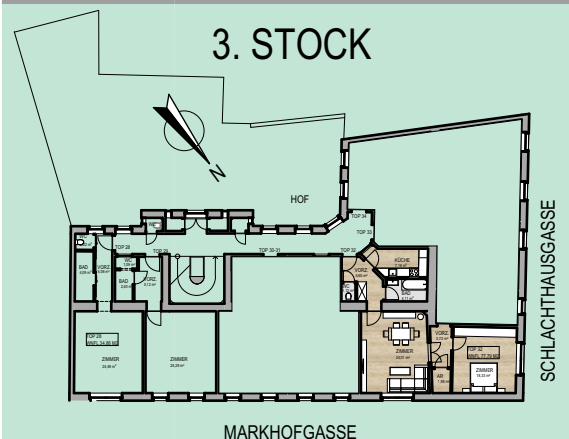
3. STOCK

WNFL
77,79 m²

| | |
|--------|----------|
| VORZ. | 5,60 m² |
| KÜCHE | 7,16 m² |
| BAD | 4,11 m² |
| WC | 1,12 m² |
| ZIMMER | 24,01 m² |
| ZIMMER | 18,33 m² |
| VORZ. | 3,73 m² |
| VORZ. | 1,98 m² |
| ZIMMER | 11,75 m² |

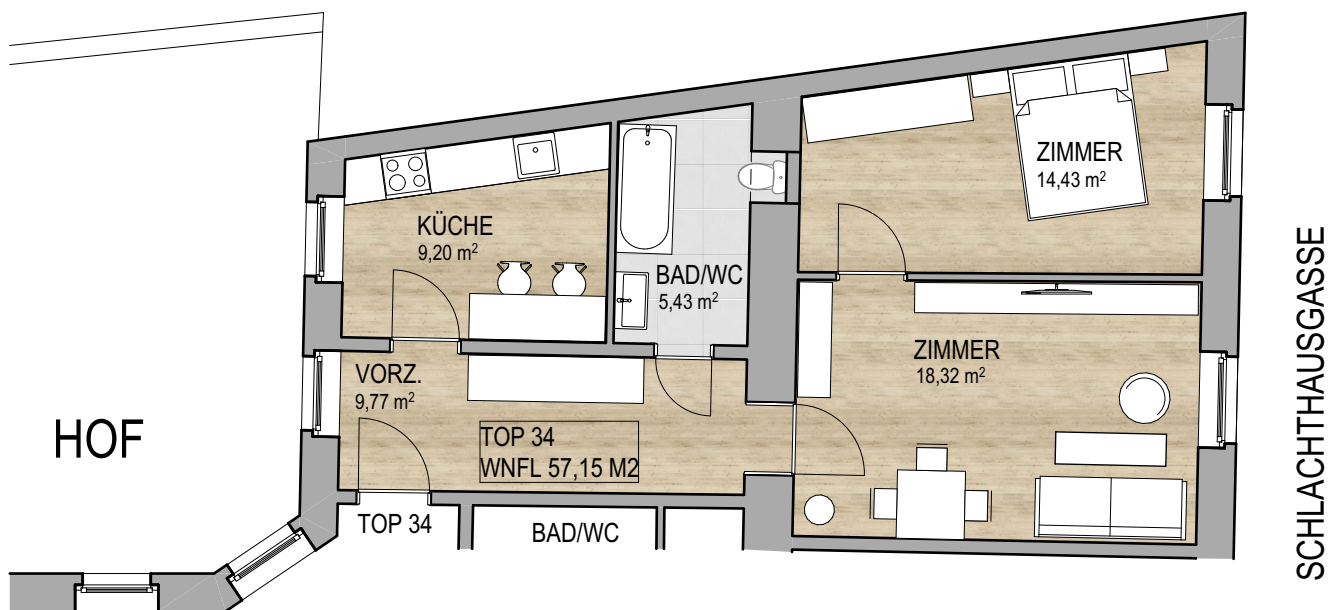
LAGEPLAN

3. STOCK



EIGENTUMSWOHNUNG

MARKHOFGASSE 2, 1030 WIEN



TOP 34 3. STOCK

| | | |
|----------------------------|---------------|----------------------|
| WNFL | VORZ. | 9,77 m ² |
| 57,15 m² | KÜCHE | 9,20 m ² |
| | BAD/WC | 5,43 m ² |
| | ZIMMER | 18,32 m ² |
| | ZIMMER | 14,43 m ² |

LAGEPLAN

