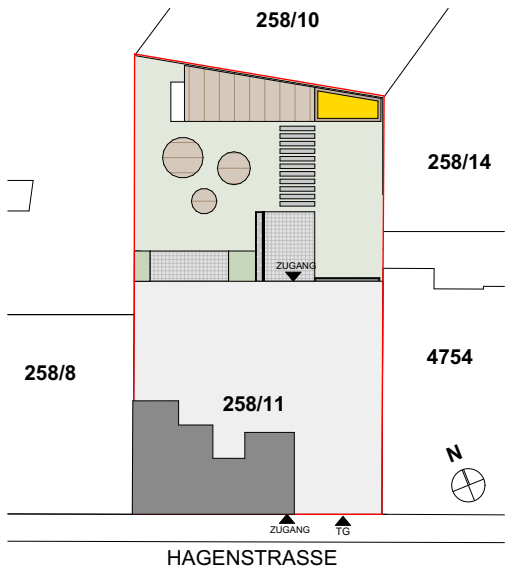
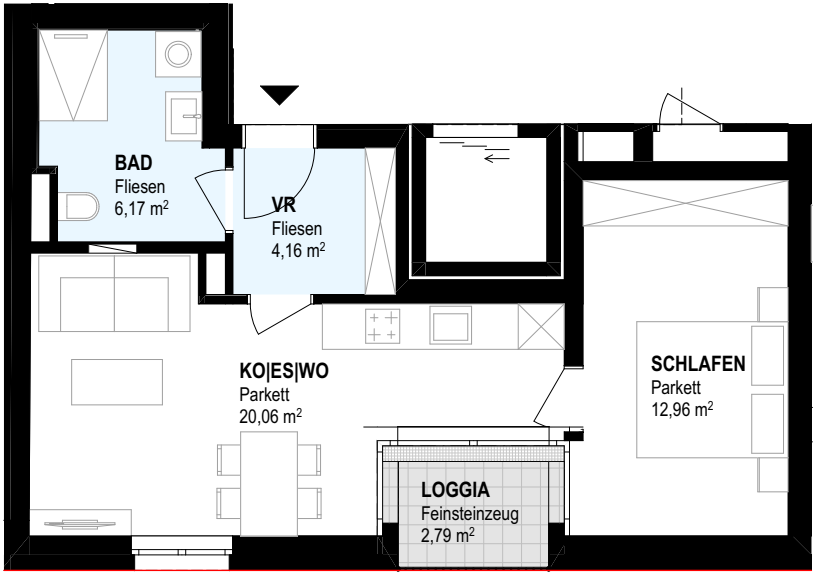


**Top 08**  
3.OBERGESCHOSS



Kochen, Essen, Wohnen	20,06 m <sup>2</sup>
Schlafen	12,96 m <sup>2</sup>
Vorraum	4,16 m <sup>2</sup>
Bad	6,17 m <sup>2</sup>
<b>SUMME</b>	<b>43,35 m<sup>2</sup></b>
<hr/>	
Loggia	2,79 m <sup>2</sup>

M 1:100

