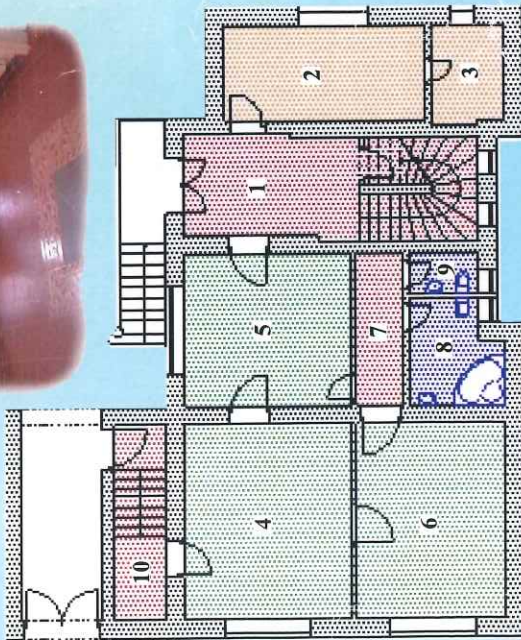


# GROUND FLOOR



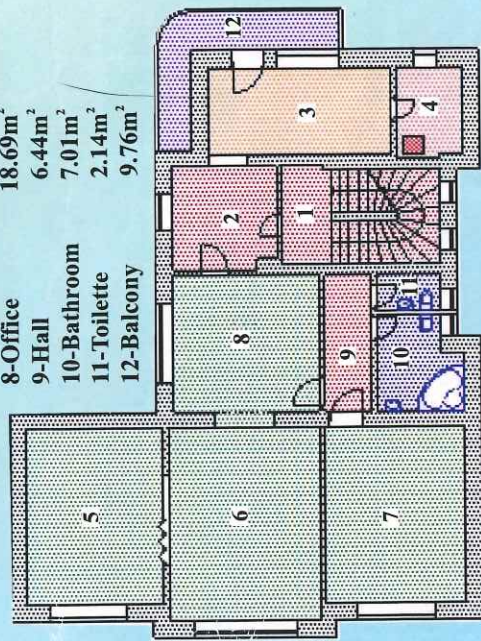
- 1-Access hall 23.01m<sup>2</sup>
- 2-Utilities 14.95m<sup>2</sup>
- 3-Store-room 5.49m<sup>2</sup>
- 4-Office 25.30m<sup>2</sup>
- 5-Office 19.58m<sup>2</sup>
- 6-Office 22.27m<sup>2</sup>
- 7-Hall 5.81m<sup>2</sup>
- 8-Bathroom 7.01m<sup>2</sup>
- 9-Toilette 2.14m<sup>2</sup>
- 10-Hall 14.57m<sup>2</sup>



# FIRST FLOOR



- 1-Access hall 13.25m<sup>2</sup>
- 2-Lounge 10.02m<sup>2</sup>
- 3-Utilities 14.96m<sup>2</sup>
- 4-Store-room+ central heat 5.49m<sup>2</sup>
- 5-Office 22.95m<sup>2</sup>
- 6-Office 27.14m<sup>2</sup>
- 7-Office 23.08m<sup>2</sup>
- 8-Office 18.69m<sup>2</sup>
- 9-Hall 6.44m<sup>2</sup>
- 10-Bathroom 7.01m<sup>2</sup>
- 11-Toilette 2.14m<sup>2</sup>
- 12-Balcony 9.76m<sup>2</sup>

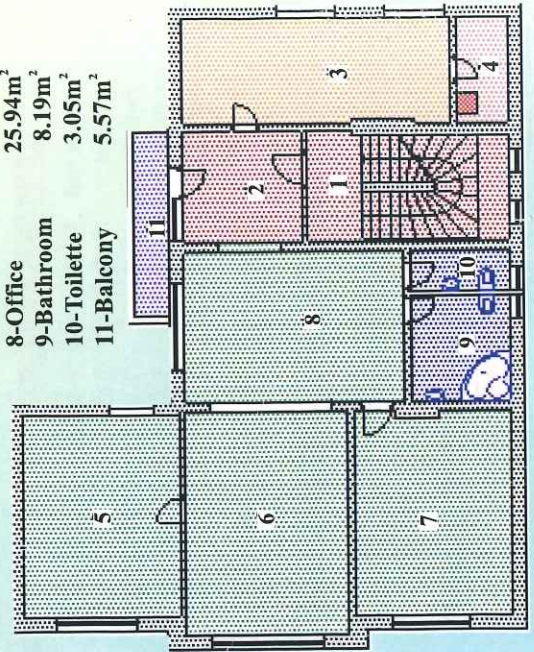


**EACH FLOOR HAS SEPARATE CENTRAL HEAT, WATER, ELECTRICITY AND GAS METER.**

# SECOND FLOOR

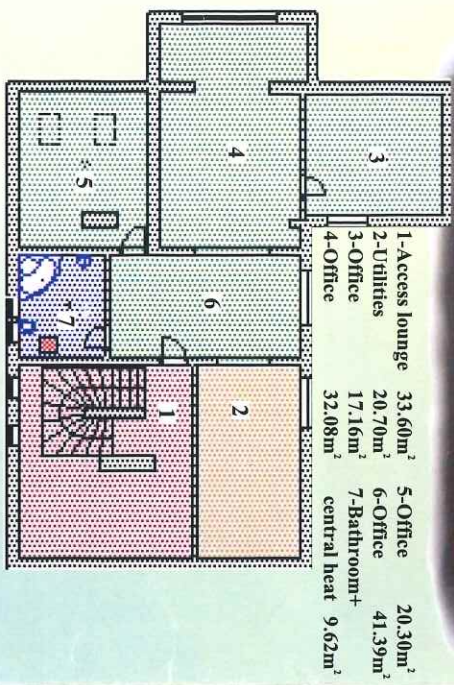


- 1-Access hall 16.14m<sup>2</sup>
- 2-Lounge 10.22m<sup>2</sup>
- 3-Utilities 21.62m<sup>2</sup>
- 4-Store-room+ central heat 4.20m<sup>2</sup>
- 5-Office 24.86m<sup>2</sup>
- 6-Office 28.55m<sup>2</sup>
- 7-Office 25.11m<sup>2</sup>
- 8-Office 25.94m<sup>2</sup>
- 9-Bathroom 8.19m<sup>2</sup>
- 10-Toilette 3.05m<sup>2</sup>
- 11-Balcony 5.57m<sup>2</sup>



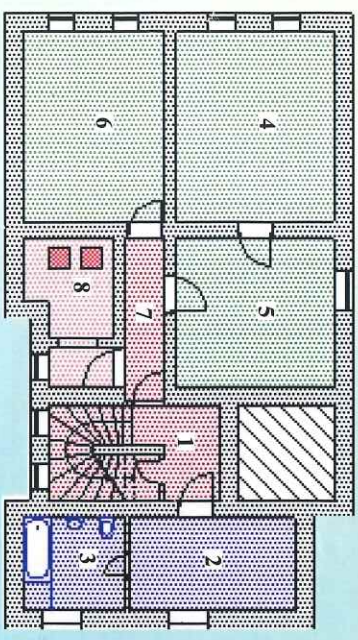


**ATTIC ROOM**

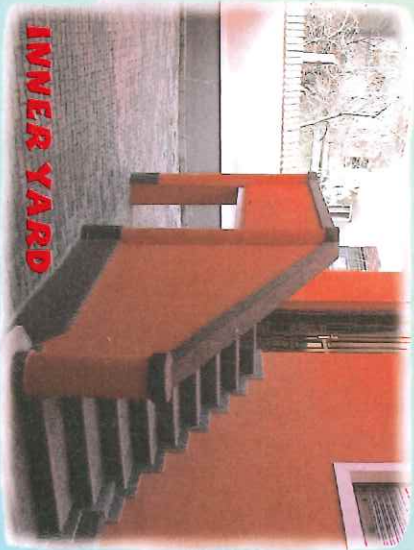
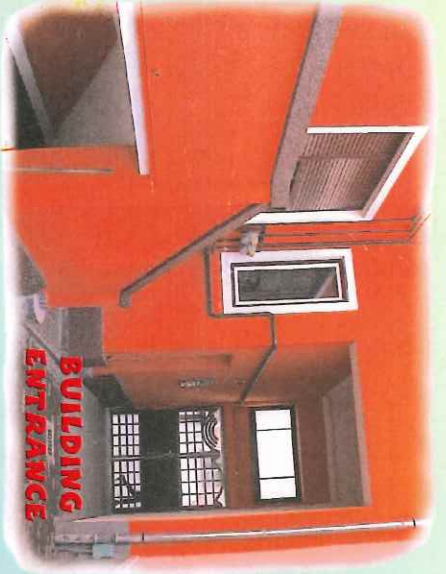


- 1-Access lounge 33.60m<sup>2</sup>
- 2-Utillities 20.70m<sup>2</sup>
- 3-Office 17.16m<sup>2</sup>
- 4-Office 32.08m<sup>2</sup>
- 5-Office 20.30m<sup>2</sup>
- 6-Office 41.39m<sup>2</sup>
- 7-Bathroom+ central heat 9.62m<sup>2</sup>

**UNDERGROUND**



- 1-Access hall 12.55m<sup>2</sup>
- 2-Utillities 19.90m<sup>2</sup>
- 3-Bathroom 7.69m<sup>2</sup>
- 4-Office 24.75m<sup>2</sup>
- 5-Office 19.25m<sup>2</sup>
- 6-Office 22.05m<sup>2</sup>
- 7-Hall 5.67m<sup>2</sup>
- 8-Central heat 8.70m<sup>2</sup>



**INNER YARD**



FOR MORE INFORMATION CONTACT US ON  
 TEL. 0722/335544, TEL/FAX: 0269/213637



**BUILT IN 1939, THE BUILDING WAS  
 COMPLETELY RENOVATED IN 2002,  
 IT IS SITUATED ON 54, CONSTANTIN NOICA STREET**



**VIEW OVER DOWNTOWN**