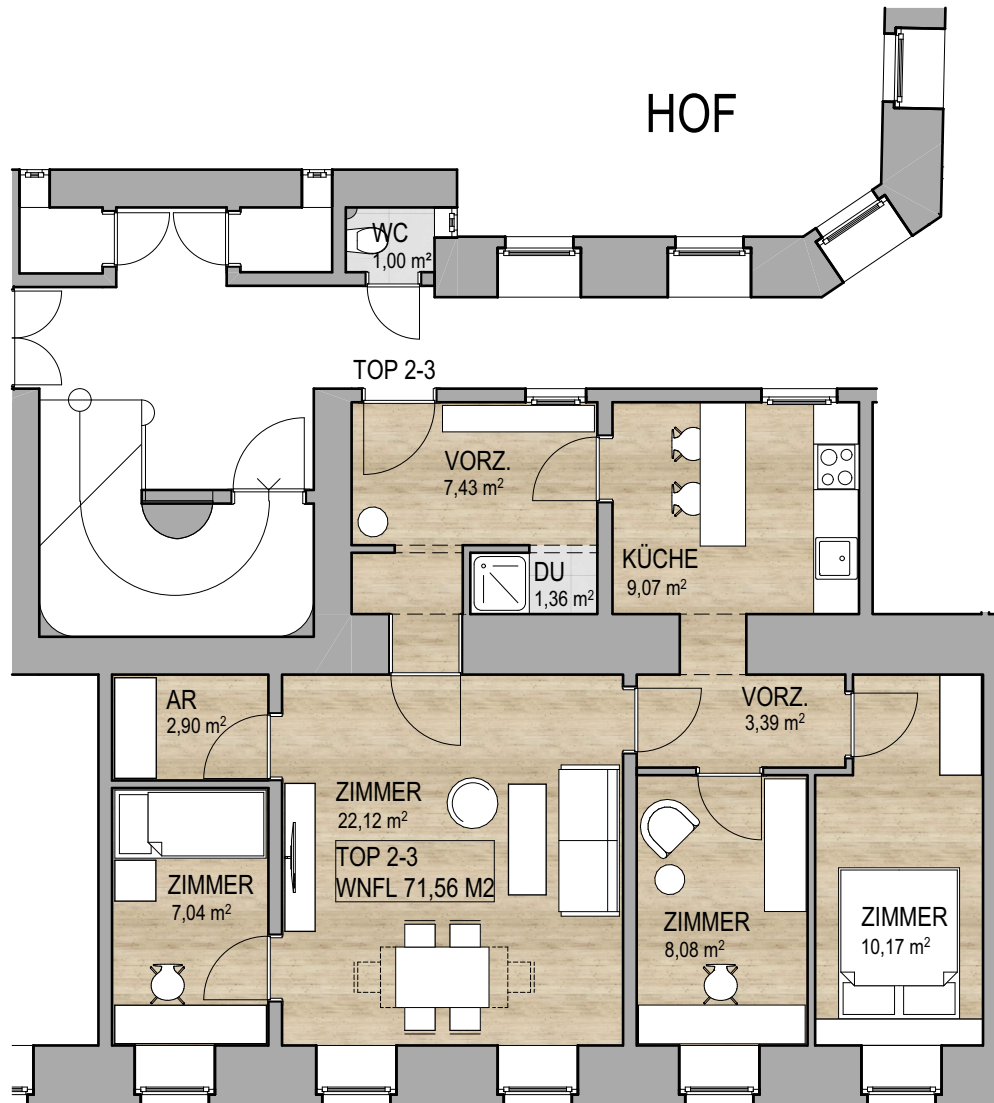


# EIGENTUMSWOHNUNG

MARKHOFGASSE 2, 1030 WIEN



TOP 2-3

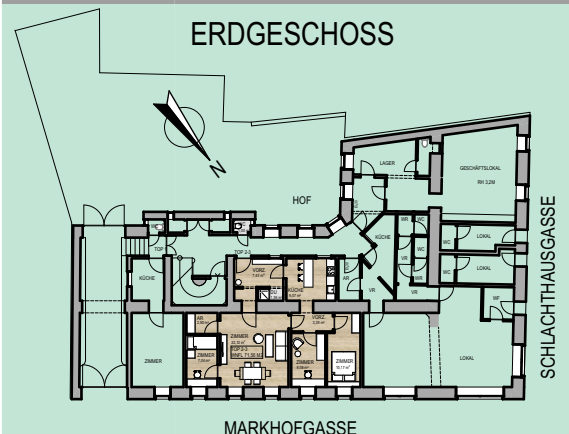
ERDGESCHOSS

WNFL  
71,56 m<sup>2</sup>

VORZ.	7,43 m <sup>2</sup>
DU	1,36 m <sup>2</sup>
AR	2,90 m <sup>2</sup>
KÜCHE	9,07 m <sup>2</sup>
VORZ.	3,39 m <sup>2</sup>
ZIMMER	7,04 m <sup>2</sup>
ZIMMER	8,08 m <sup>2</sup>
ZIMMER	22,12 m <sup>2</sup>
ZIMMER	10,17 m <sup>2</sup>
GANG WC	1,00 m <sup>2</sup>

LAGEPLAN

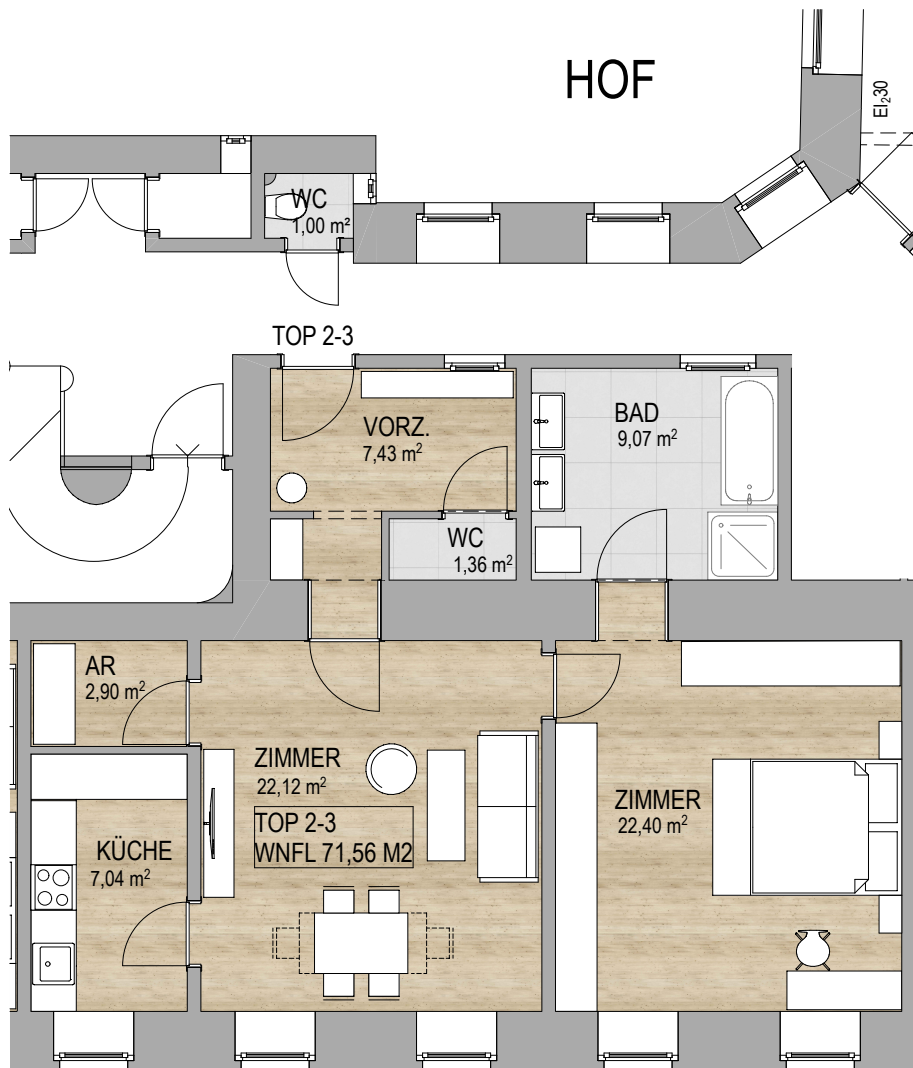
ERDGESCHOSS



Top 2-3:

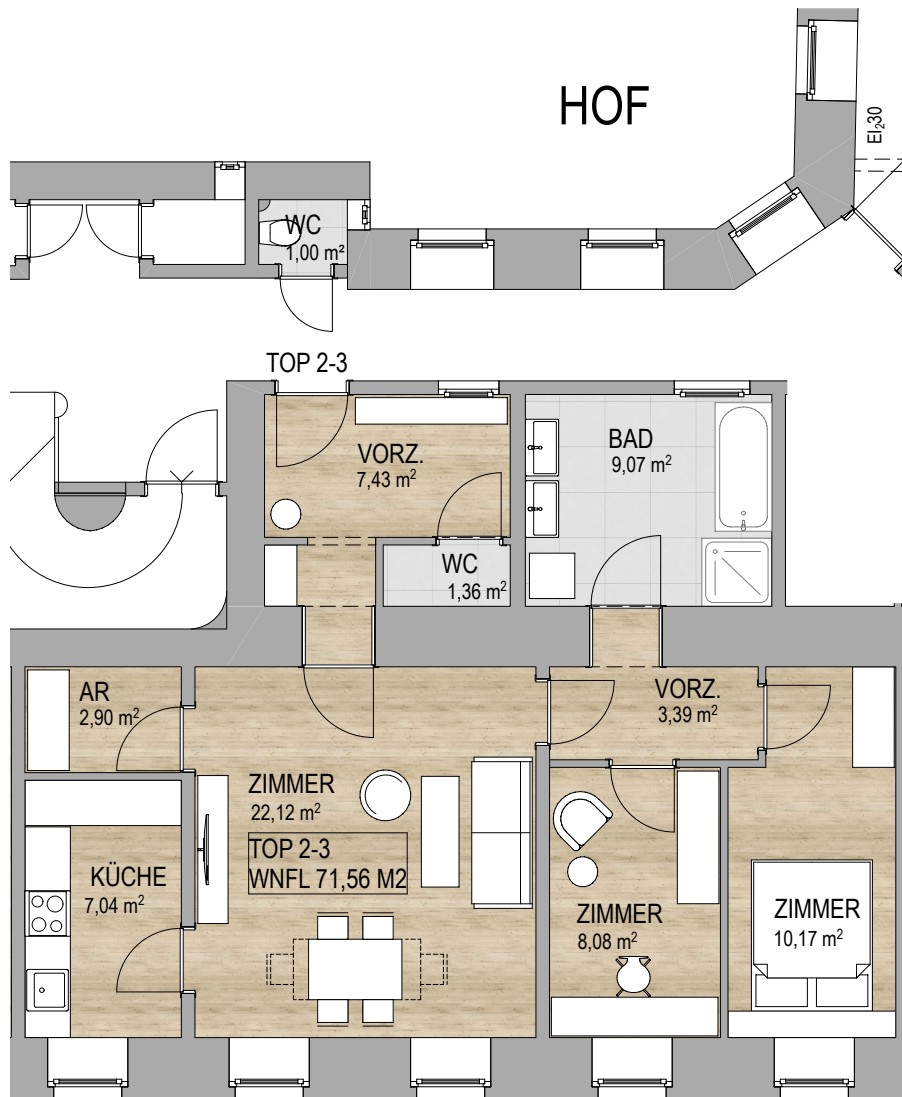
Variante A - 2 Zimmer plus vergrößertes Bad und WC innerhalb der Wohnung

(dabei handelt es sich lediglich um einen Vorschlag wie sich der Grundriss adaptieren ließe)



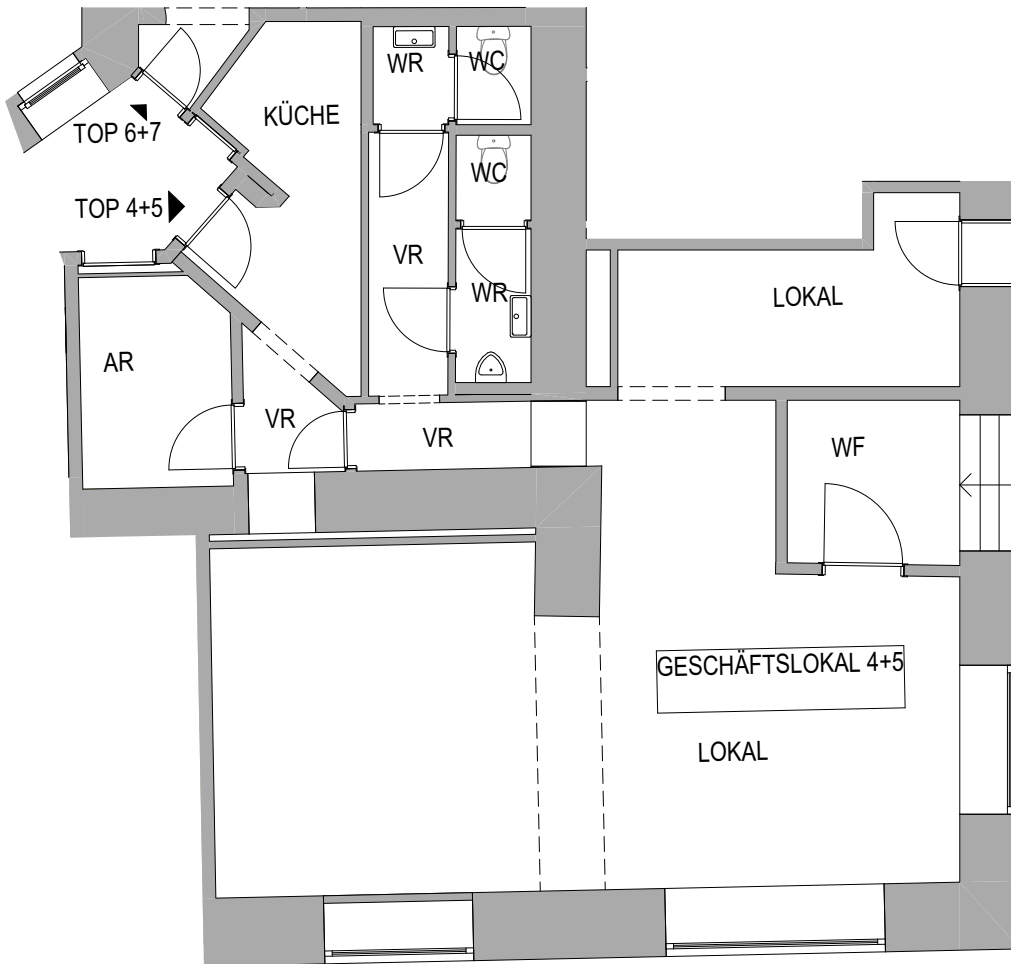
Top 2-3:

Variante B- 3 Zimmer plus vergrößertes Bad und WC innerhalb der Wohnung  
(dabei handelt es sich lediglich um einen Vorschlag wie sich der Grundriss adaptieren ließe)



# EIGENTUMSWOHNUNG

MARKHOFGASSE 2, 1030 WIEN



## ERDGESCHOSS

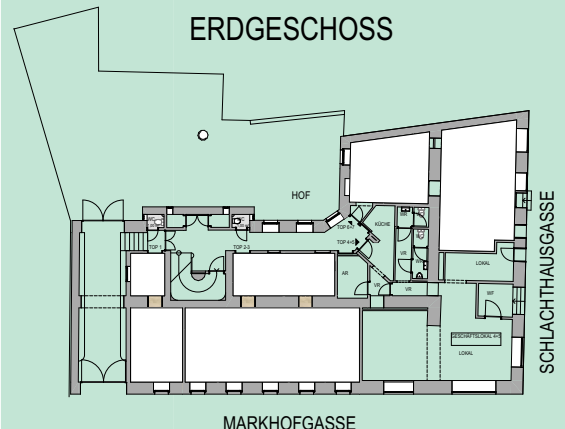
MARKHOFGASSE

TOP 4+5 ERDGESCHOSS

96,69 m<sup>2</sup>

## LAGEPLAN

ERDGESCHOSS

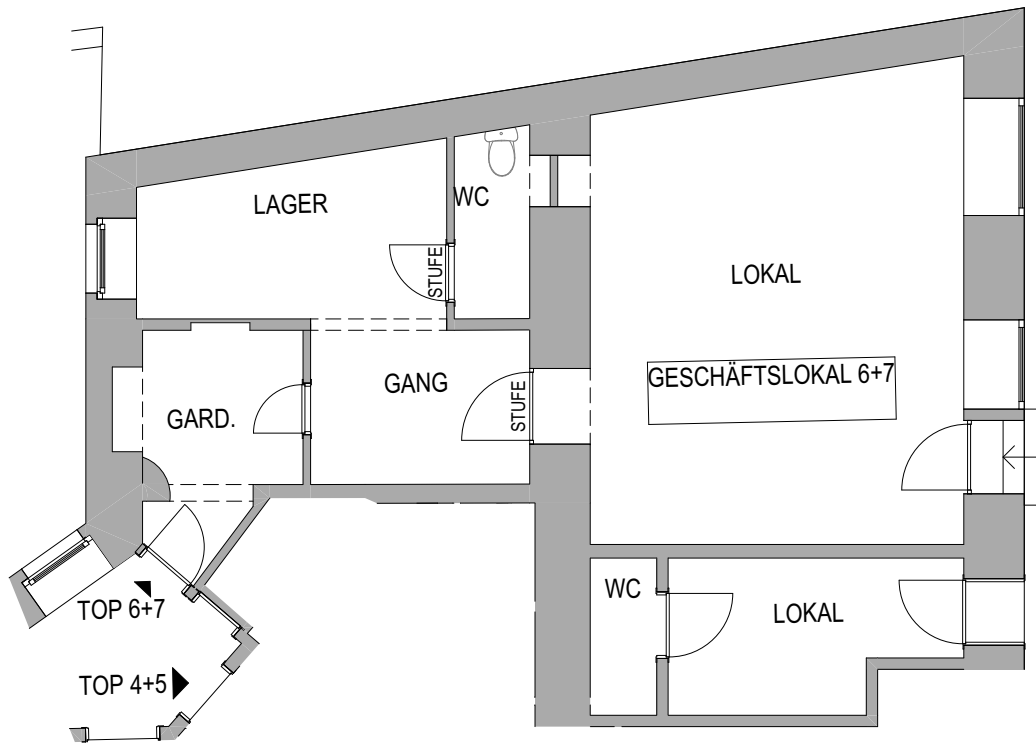


MARKHOFGASSE

SCHLACHTHAUSGASSE

# EIGENTUMSWOHNUNG

MARKHOFGASSE 2, 1030 WIEN



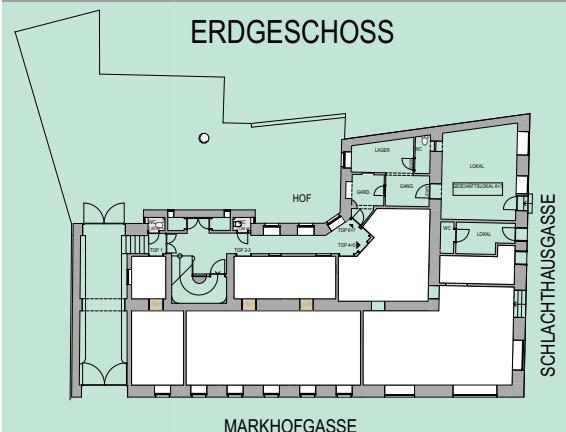
MARKHOFGASSE

TOP 6+7 ERDGESCHOSS

63,66 m<sup>2</sup>

LAGEPLAN

ERDGESCHOSS



# EIGENTUMSWOHNUNG

MARKHOFGASSE 2, 1030 WIEN



TOP 11

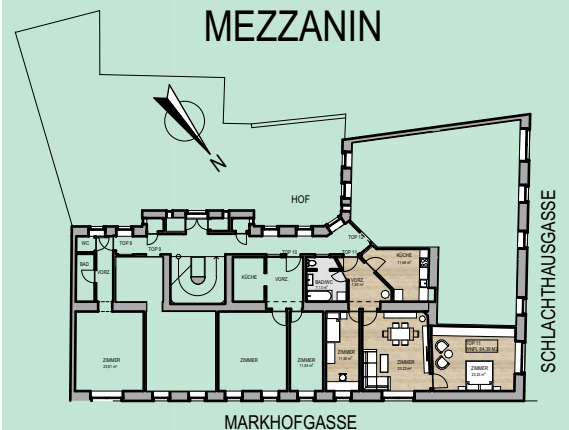
MEZZANIN

WNFL  
84,39 m<sup>2</sup>

VORZ.	7,60 m <sup>2</sup>
KÜCHE	11,66 m <sup>2</sup>
BAD/WC	7,13 m <sup>2</sup>
ZIMMER	11,55 m <sup>2</sup>
ZIMMER	23,22 m <sup>2</sup>
ZIMMER	23,23 m <sup>2</sup>

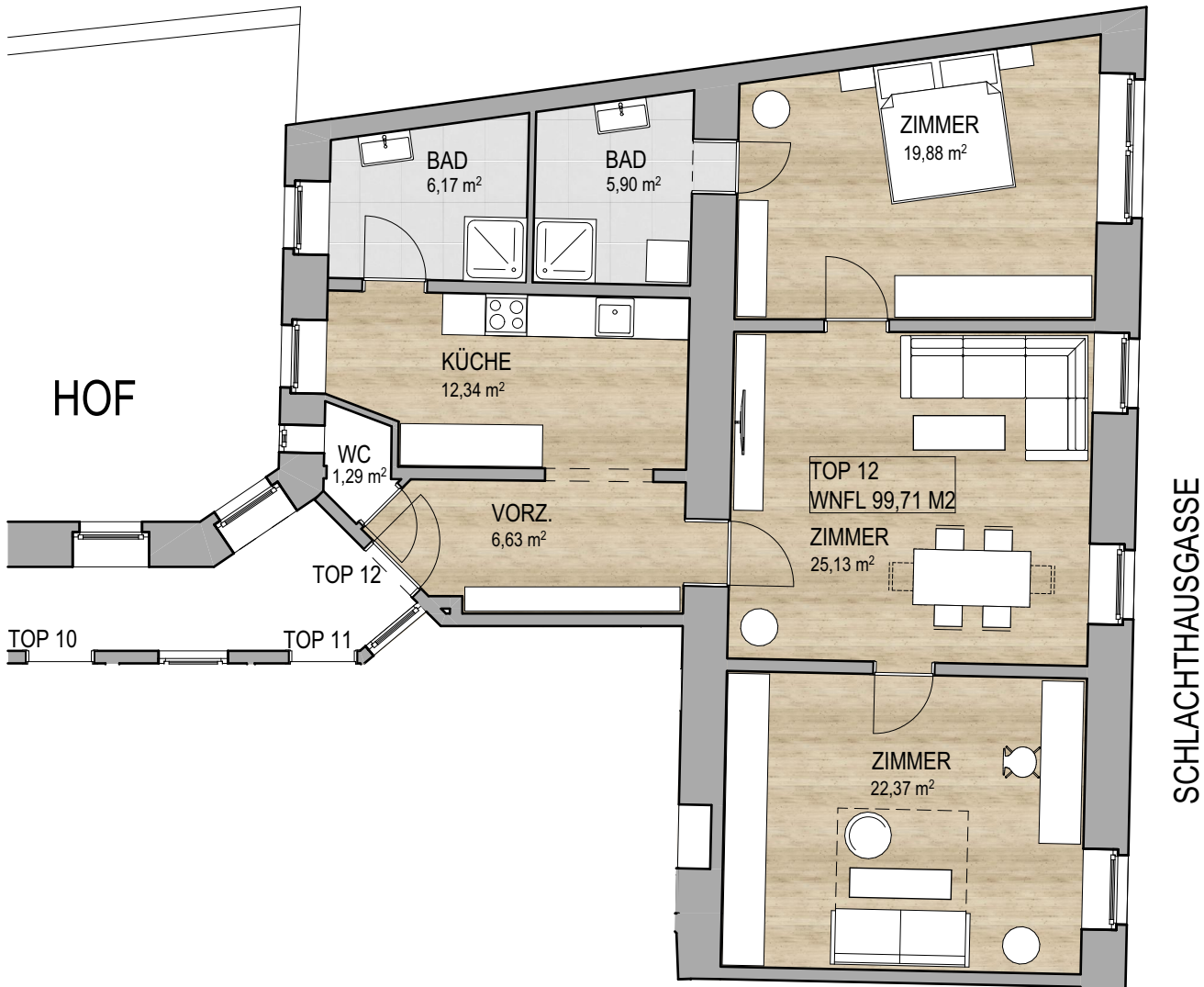
LAGEPLAN

MEZZANIN



# EIGENTUMSWOHNUNG

MARKHOFGASSE 2, 1030 WIEN



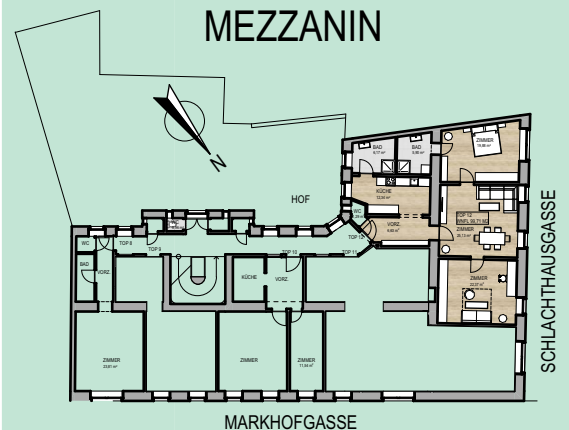
TOP 12

MEZZANIN

WNFL 99,71 m <sup>2</sup>	VORZ.	6,63 m <sup>2</sup>
	KÜCHE	12,34 m <sup>2</sup>
	WC	1,29 m <sup>2</sup>
	BAD	6,17 m <sup>2</sup>
	BAD	5,90 m <sup>2</sup>
	ZIMMER	19,88 m <sup>2</sup>
	ZIMMER	25,13 m <sup>2</sup>
ZIMMER	22,37 m <sup>2</sup>	

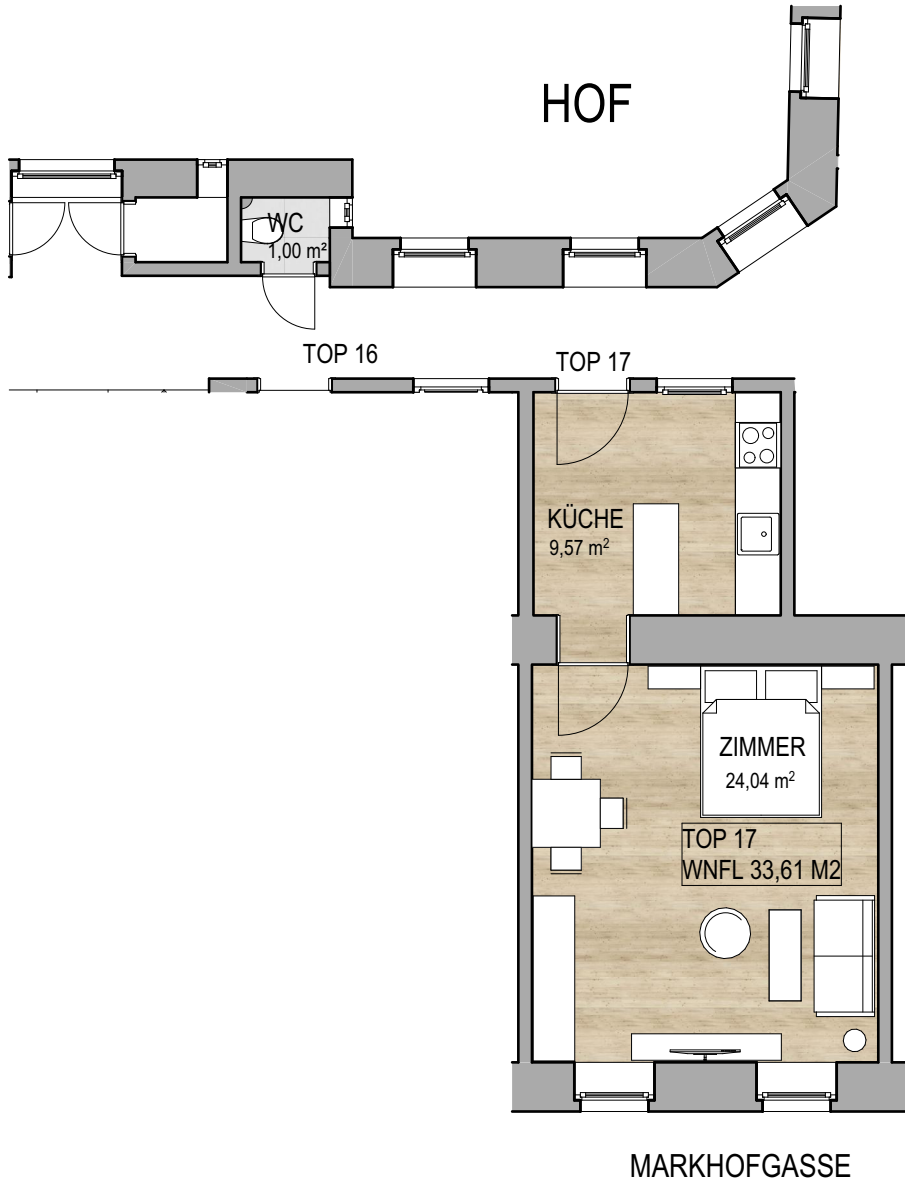
LAGEPLAN

MEZZANIN



# EIGENTUMSWOHNUNG

MARKHOFGASSE 2, 1030 WIEN



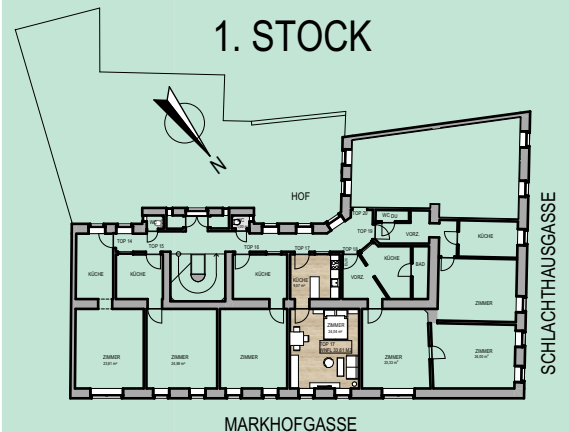
TOP 17 1. STOCK

WNFL  
33,61 m<sup>2</sup>

KÜCHE 9,57 m<sup>2</sup>  
ZIMMER 24,04 m<sup>2</sup>  
GANGL WC 1,00 m<sup>2</sup>

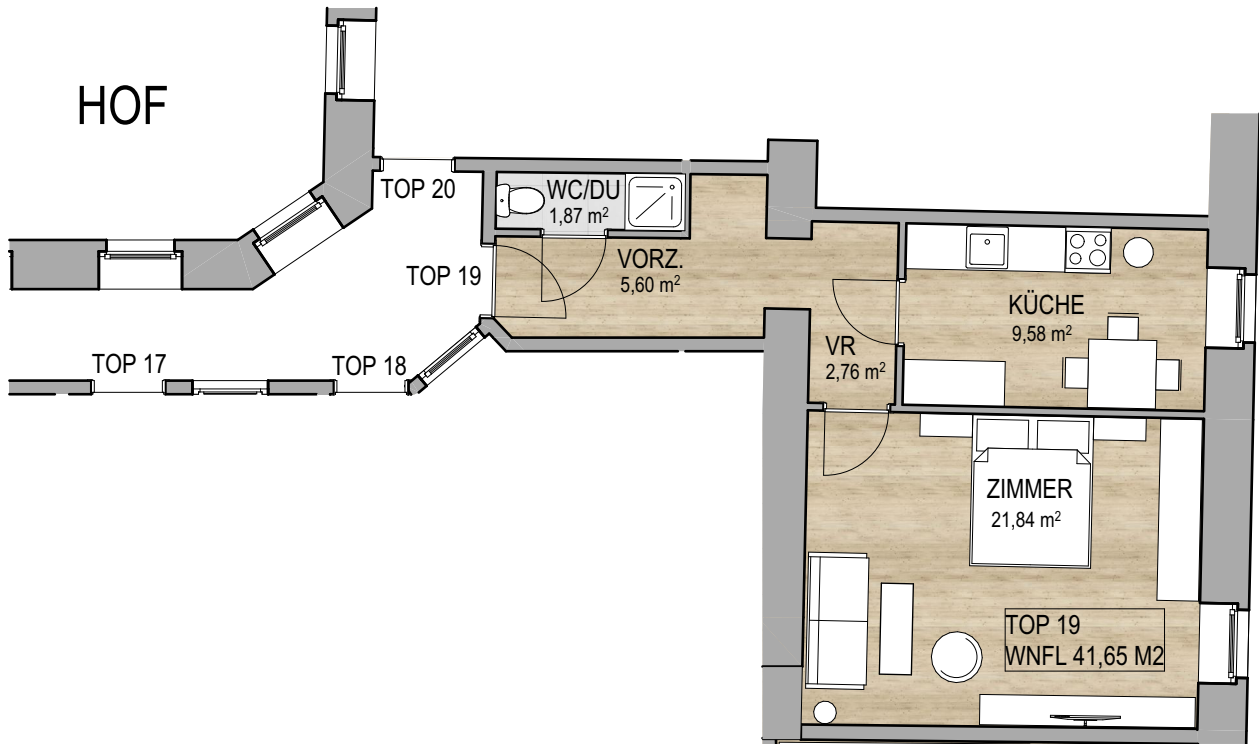
LAGEPLAN

1. STOCK



# EIGENTUMSWOHNUNG

MARKHOFGASSE 2, 1030 WIEN



MARKHOFGASSE

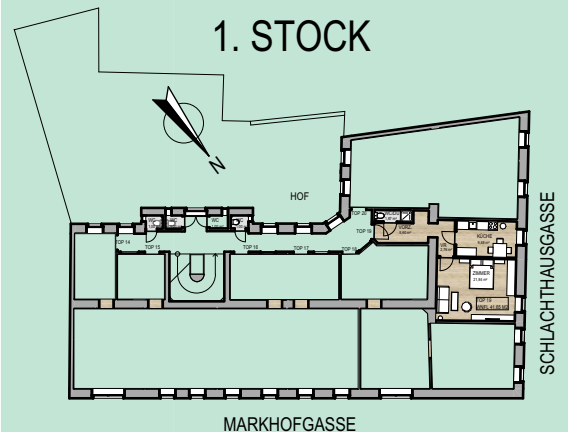
TOP 19 1. STOCK

WNFL  
41,65 m<sup>2</sup>

VORZ.	5,60 m <sup>2</sup>
VR.	2,76 m <sup>2</sup>
KÜCHE	9,58 m <sup>2</sup>
WC / DU	1,87 m <sup>2</sup>
ZIMMER	21,84 m <sup>2</sup>

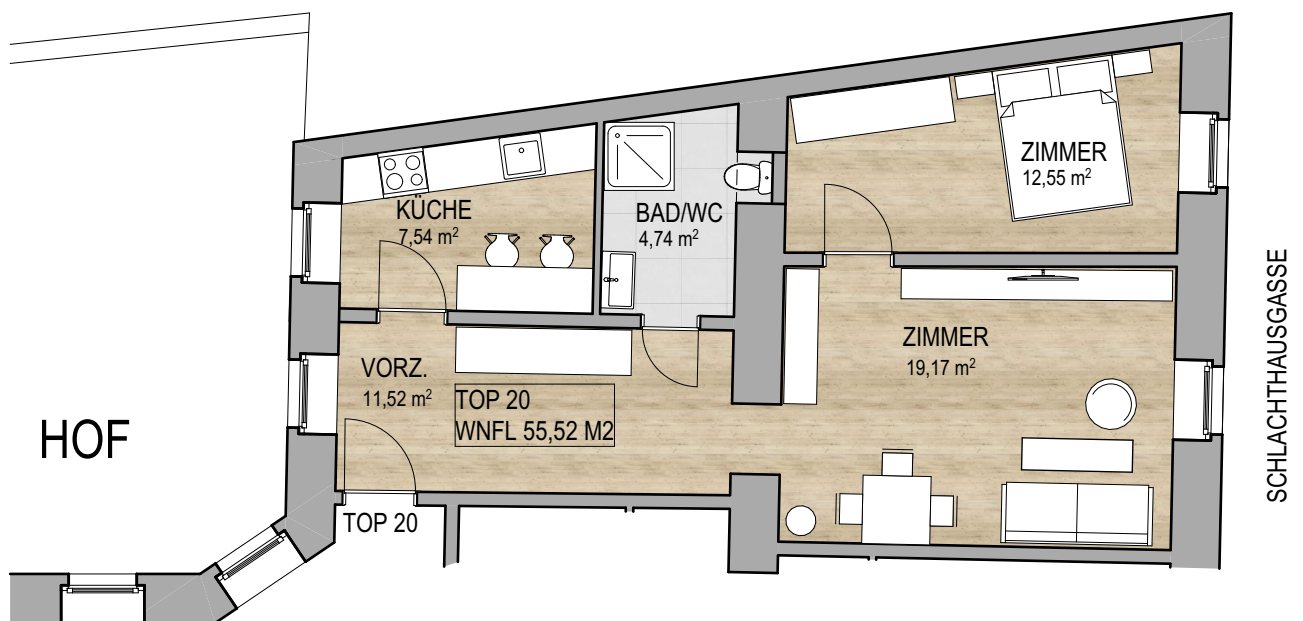
LAGEPLAN

1. STOCK



# EIGENTUMSWOHNUNG

MARKHOFGASSE 2, 1030 WIEN

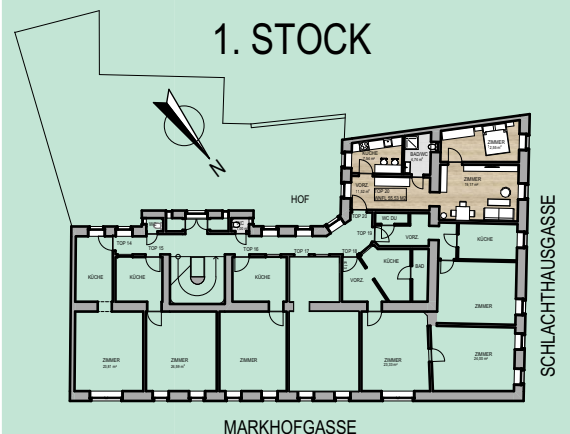


## TOP 20 1. STOCK

WNFL	VORZ.	11,52 m <sup>2</sup>
55,52 m <sup>2</sup>	KÜCHE	7,54 m <sup>2</sup>
	BAD/WC	4,74 m <sup>2</sup>
	ZIMMER	19,17 m <sup>2</sup>
	ZIMMER	12,55 m <sup>2</sup>

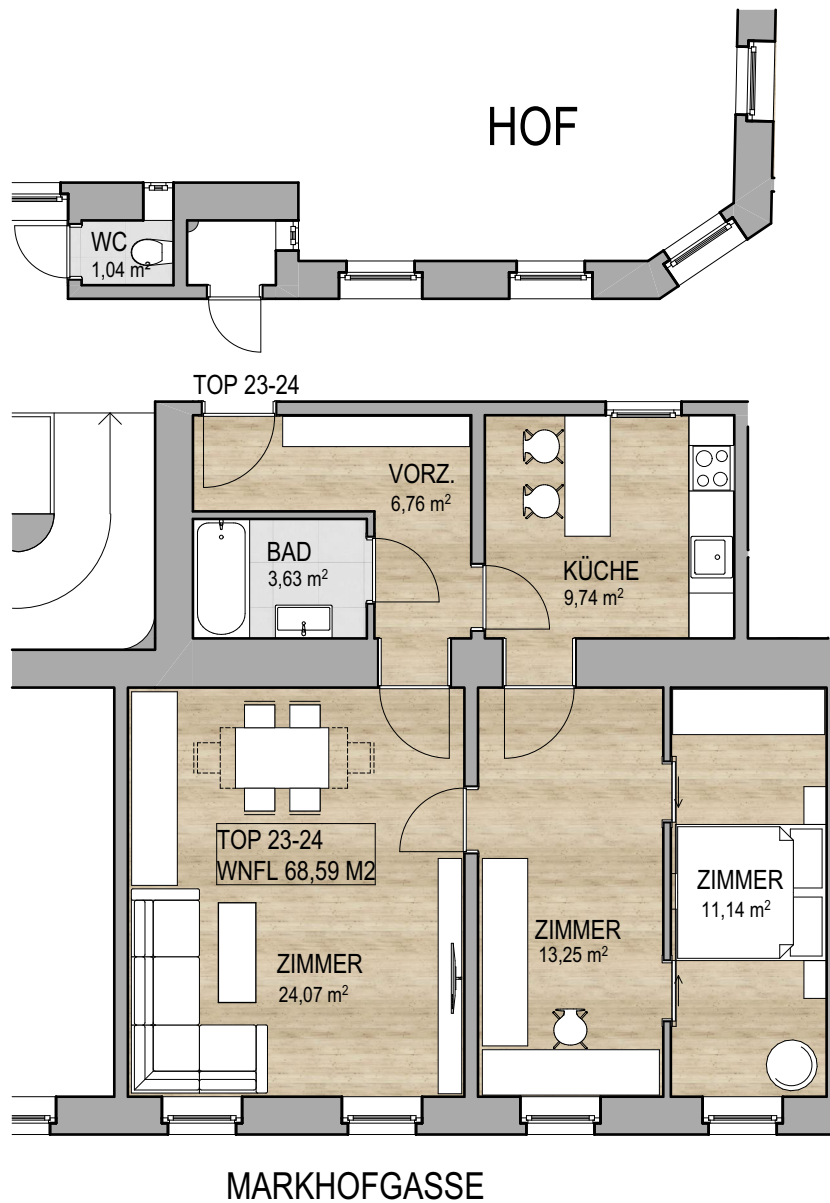
## LAGEPLAN

### 1. STOCK



# EIGENTUMSWOHNUNG

MARKHOFGASSE 2, 1030 WIEN



TOP

2. STOCK

23-24

WNFL  
68,59 m<sup>2</sup>

VORZ.	6,76 m <sup>2</sup>
KÜCHE	9,74 m <sup>2</sup>
BAD	3,63 m <sup>2</sup>
ZIMMER	24,07 m <sup>2</sup>
ZIMMER	13,25 m <sup>2</sup>
ZIMMER	11,14 m <sup>2</sup>
GANG WC	1,04 m <sup>2</sup>

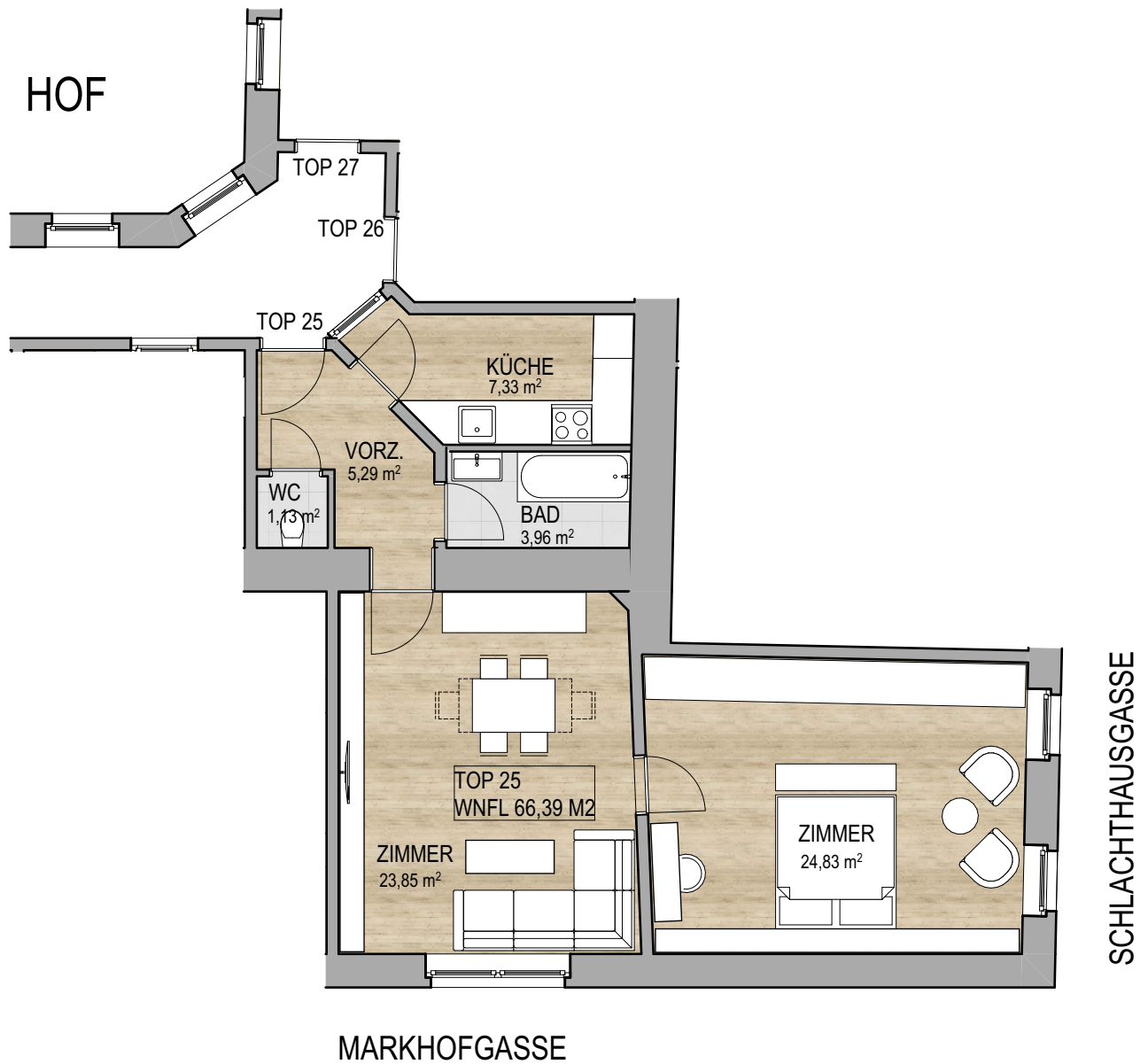
LAGEPLAN

2. STOCK



# EIGENTUMSWOHNUNG

MARKHOFGASSE 2, 1030 WIEN

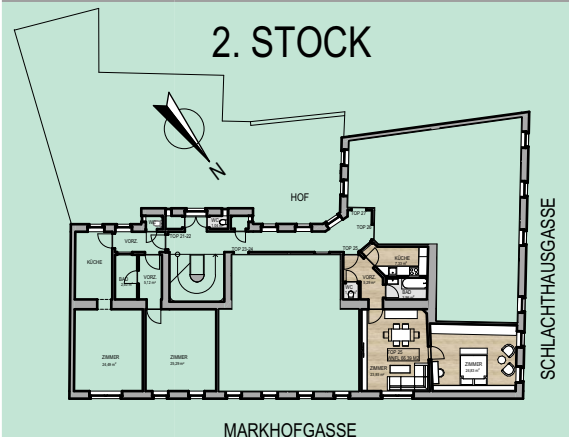


TOP 25 2. STOCK

WNFL	VORZ.	5,29 m <sup>2</sup>
66,39 m <sup>2</sup>	KÜCHE	7,33 m <sup>2</sup>
	BAD	3,96 m <sup>2</sup>
	WC	1,13 m <sup>2</sup>
	ZIMMER	23,85 m <sup>2</sup>
	ZIMMER	24,83 m <sup>2</sup>

LAGEPLAN

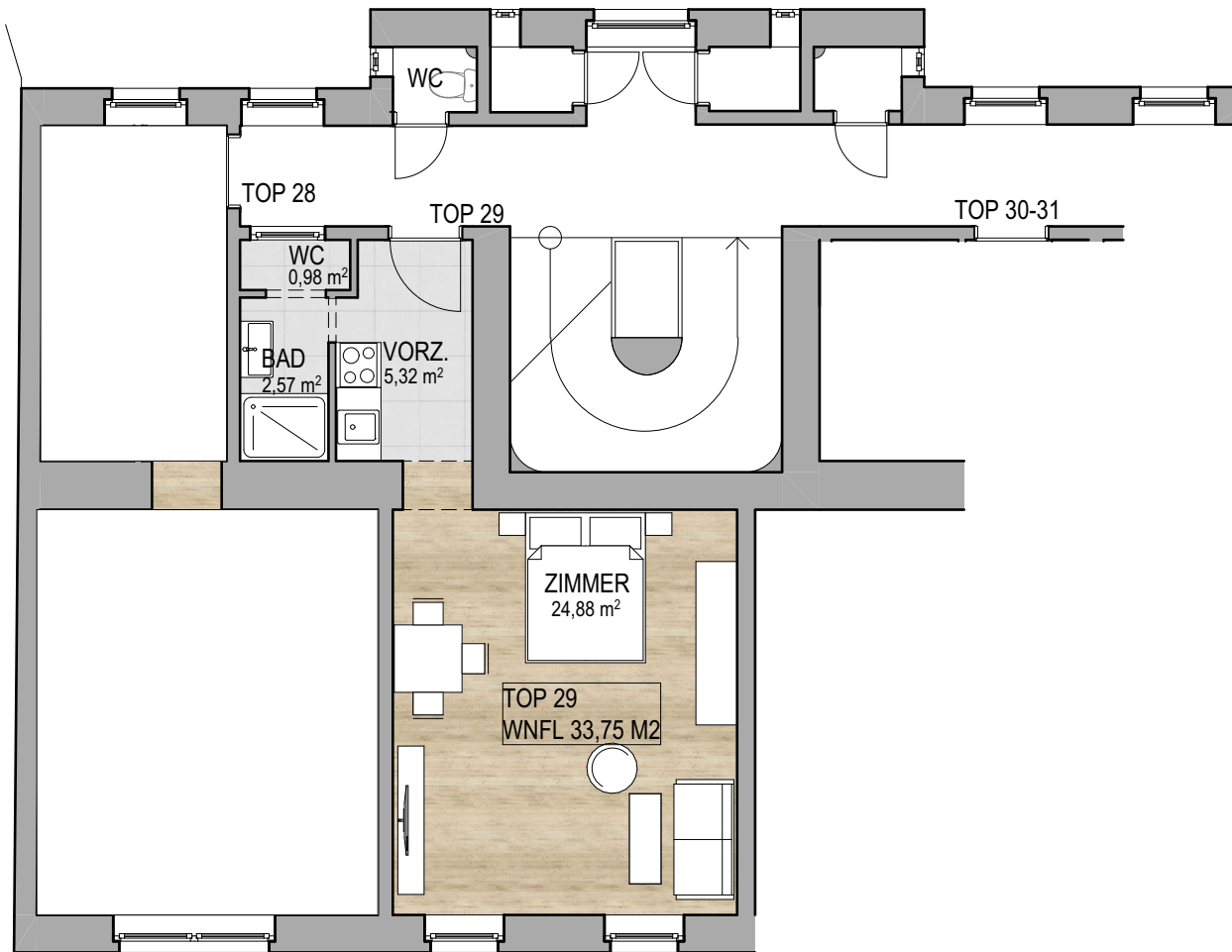
2. STOCK



# EIGENTUMSWOHNUNG

MARKHOFGASSE 2, 1030 WIEN

HOF



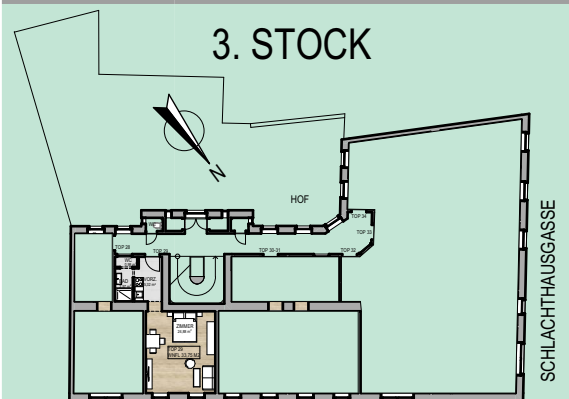
MARKHOFGASSE

TOP 29 3. STOCK

WNFL	VORZ.	5,32 m <sup>2</sup>
33,75 m <sup>2</sup>	BAD	2,57 m <sup>2</sup>
	WC	0,98 m <sup>2</sup>
	ZIMMER	24,88 m <sup>2</sup>

LAGEPLAN

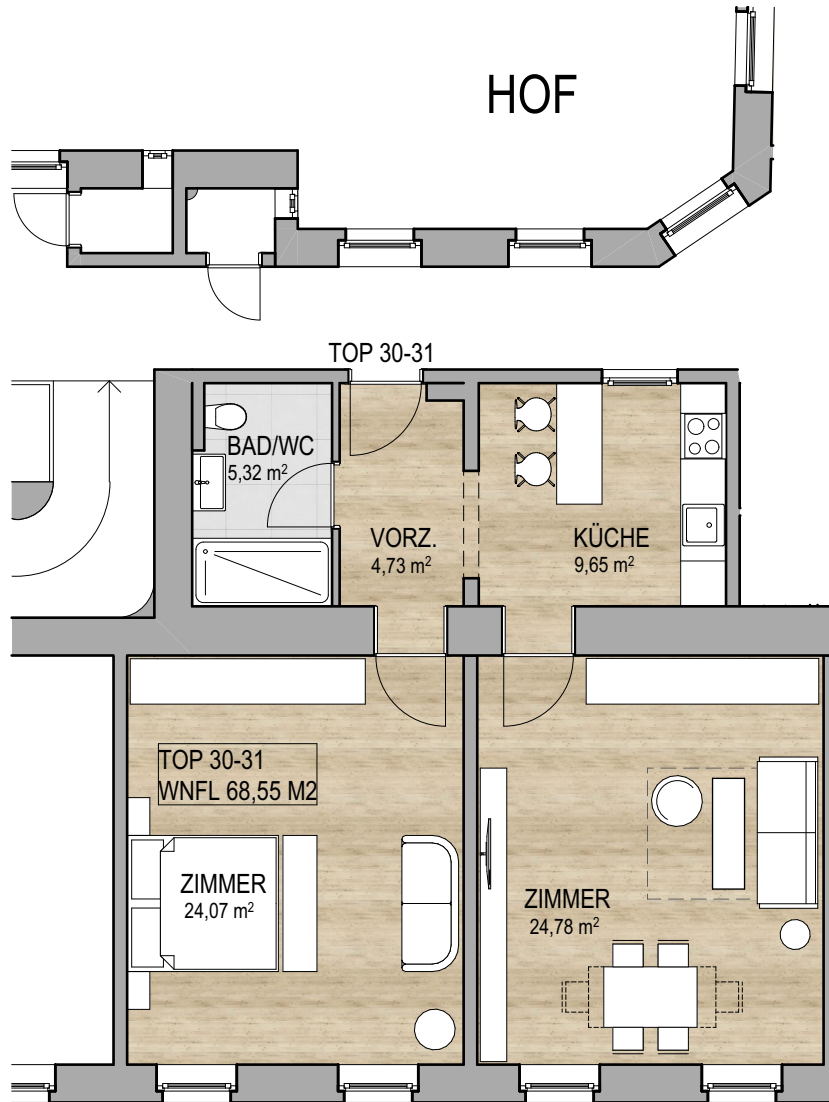
3. STOCK



MARKHOFGASSE

# EIGENTUMSWOHNUNG

MARKHOFGASSE 2, 1030 WIEN



MARKHOFGASSE

TOP

3. STOCK

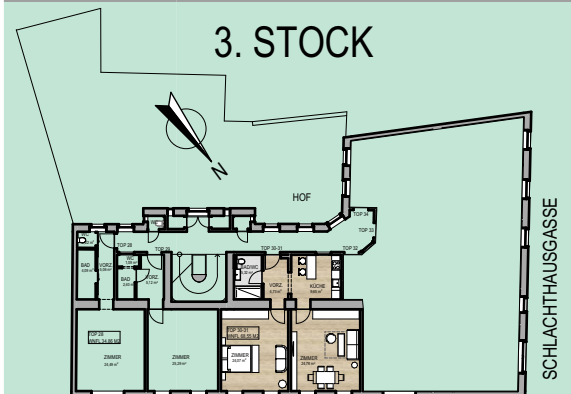
30-31

WNFL  
68,55 m<sup>2</sup>

VORZ.	4,73 m <sup>2</sup>
KÜCHE	9,65 m <sup>2</sup>
BAD/WC	5,32 m <sup>2</sup>
ZIMMER	24,07 m <sup>2</sup>
ZIMMER	24,78 m <sup>2</sup>

## LAGEPLAN

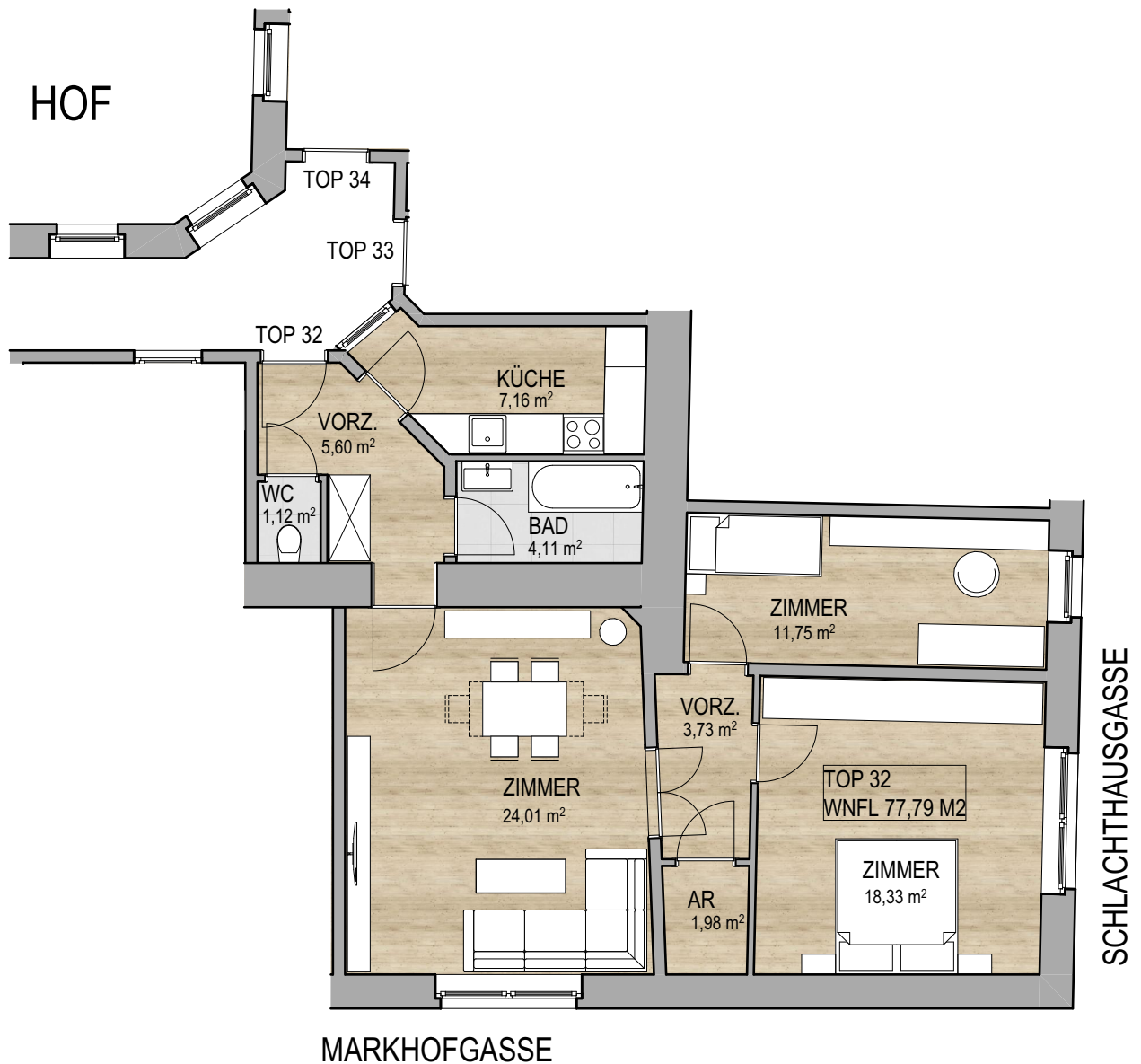
3. STOCK



MARKHOFGASSE

# EIGENTUMSWOHNUNG

MARKHOFGASSE 2, 1030 WIEN



TOP 32

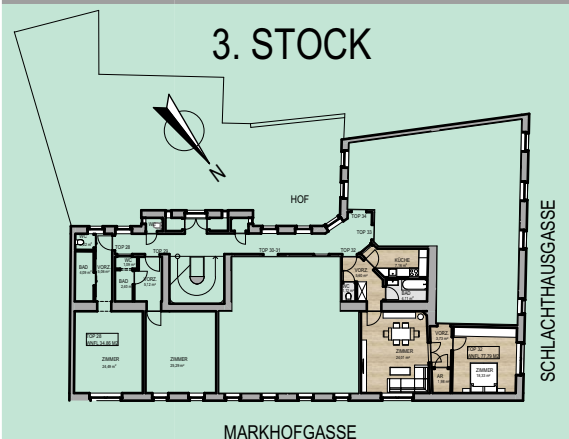
3. STOCK

WNFL  
77,79 m<sup>2</sup>

VORZ.	5,60 m <sup>2</sup>
KÜCHE	7,16 m <sup>2</sup>
BAD	4,11 m <sup>2</sup>
WC	1,12 m <sup>2</sup>
ZIMMER	24,01 m <sup>2</sup>
ZIMMER	18,33 m <sup>2</sup>
VORZ.	3,73 m <sup>2</sup>
VORZ.	1,98 m <sup>2</sup>
ZIMMER	11,75 m <sup>2</sup>

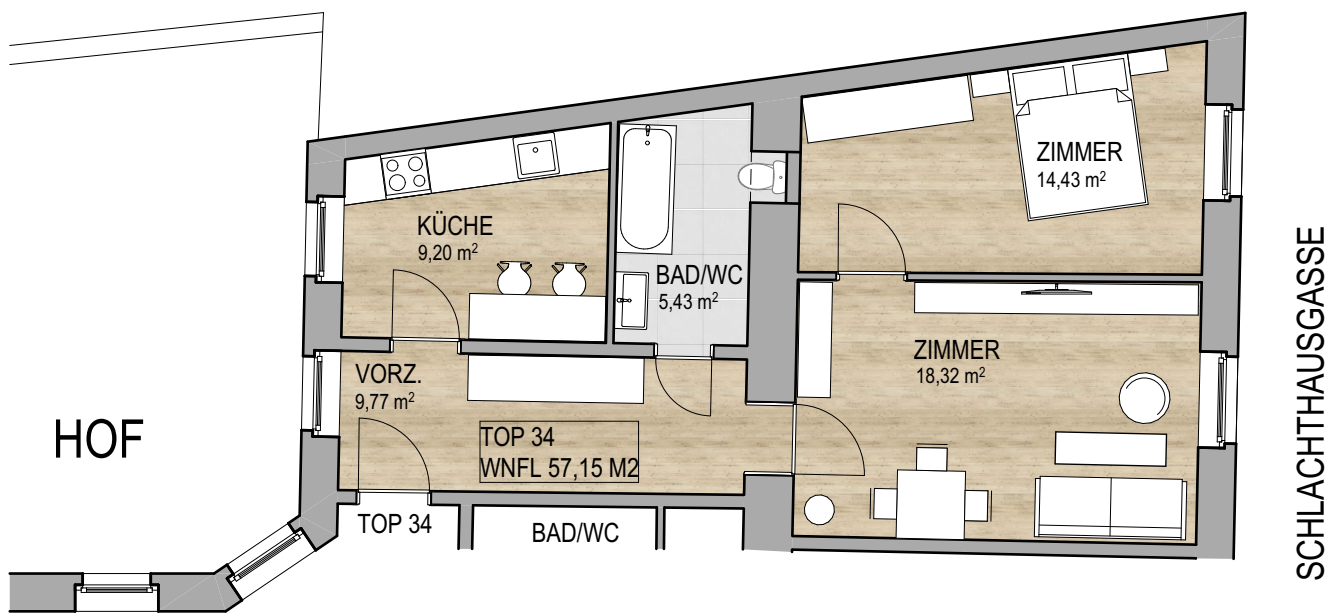
LAGEPLAN

3. STOCK



# EIGENTUMSWOHNUNG

MARKHOFGASSE 2, 1030 WIEN

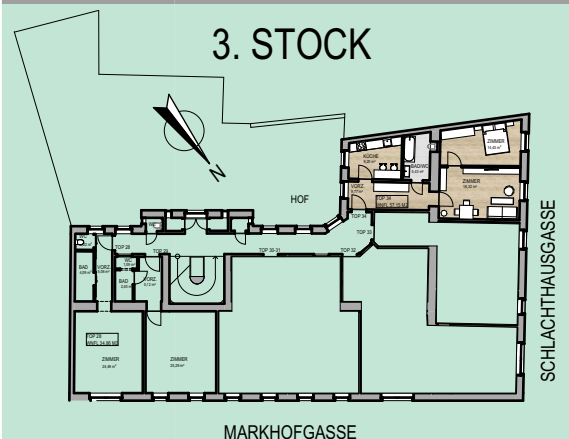


TOP 34 3. STOCK

WNFL	VORZ.	9,77 m <sup>2</sup>
57,15 m <sup>2</sup>	KÜCHE	9,20 m <sup>2</sup>
	BAD/WC	5,43 m <sup>2</sup>
	ZIMMER	18,32 m <sup>2</sup>
	ZIMMER	14,43 m <sup>2</sup>

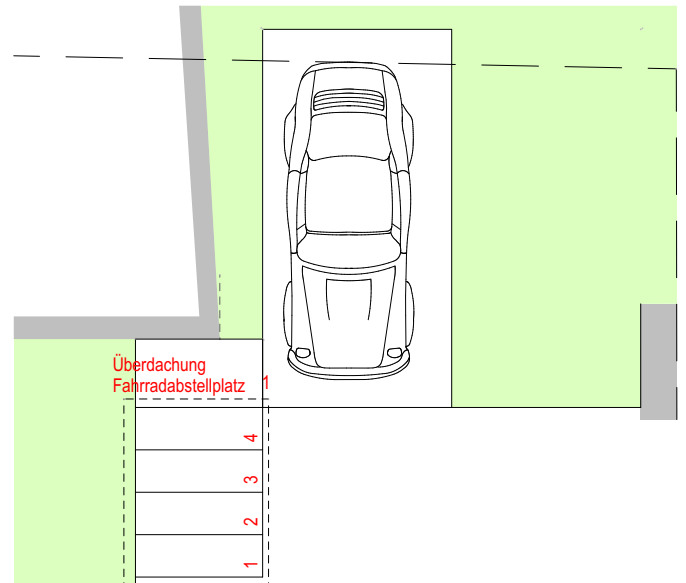
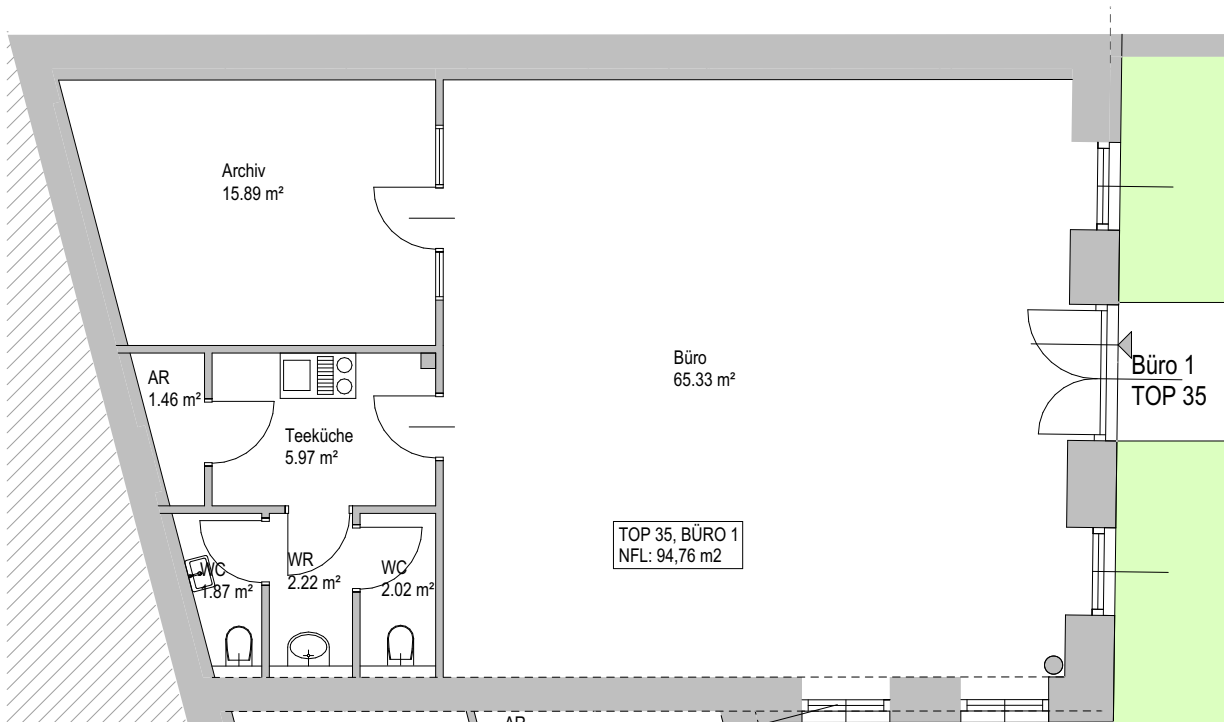
LAGEPLAN

3. STOCK



# EIGENTUMSWOHNUNG

MARKHOFGASSE 2, 1030 WIEN

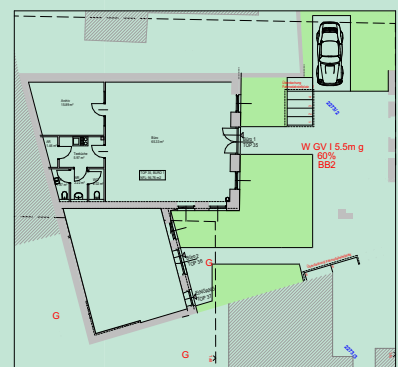


TOP 35

BÜRO 1

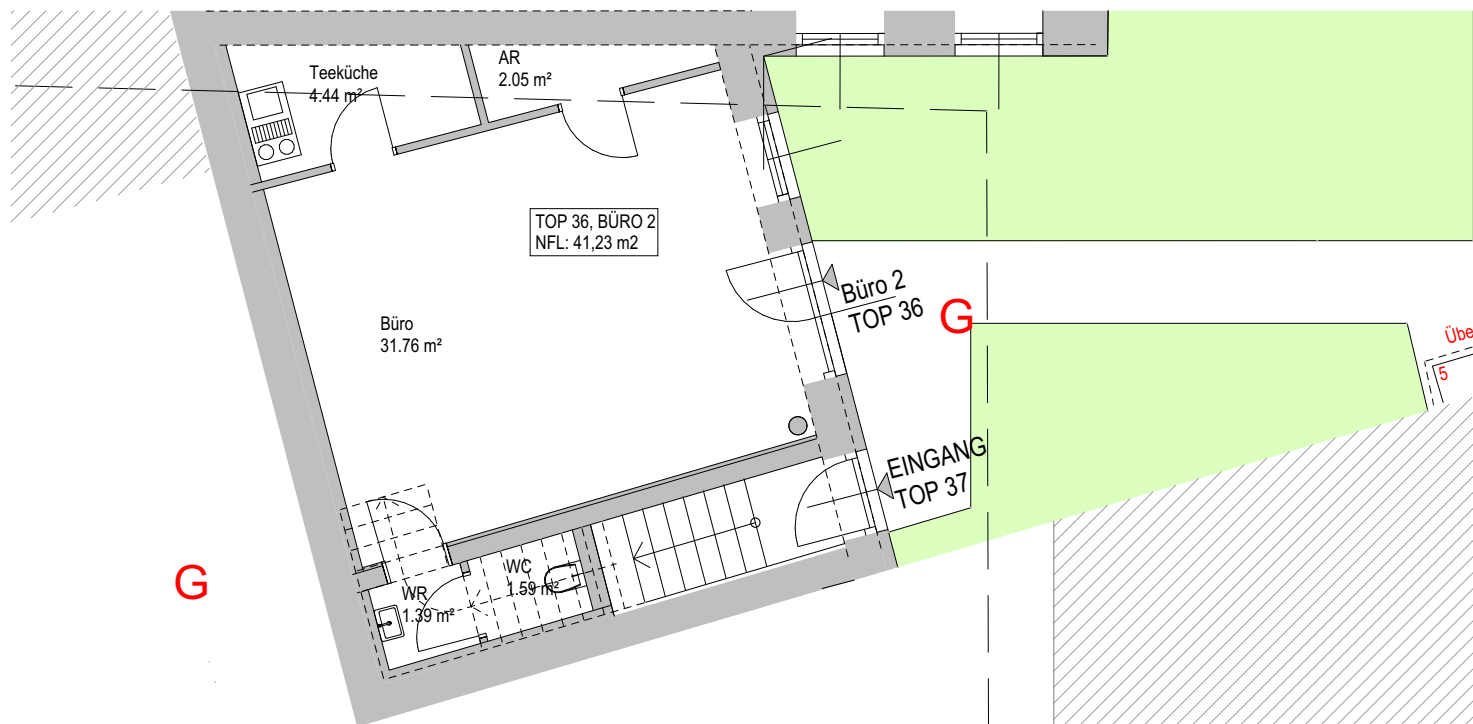
WNFL	AR	1,46 m <sup>2</sup>
94,76 m <sup>2</sup>	TEEKÜCHE	5,97 m <sup>2</sup>
	WC	1,87 m <sup>2</sup>
	WC	2,02 m <sup>2</sup>
	WR	2,22 m <sup>2</sup>
	ARCHIV	15,89 m <sup>2</sup>
	BÜRO	65,33 m <sup>2</sup>
	STELLPLATZ	

LAGEPLAN



# EIGENTUMSWOHNUNG

MARKHOFGASSE 2, 1030 WIEN

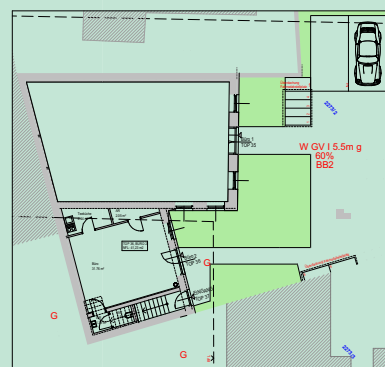


TOP 36

BÜRO 2

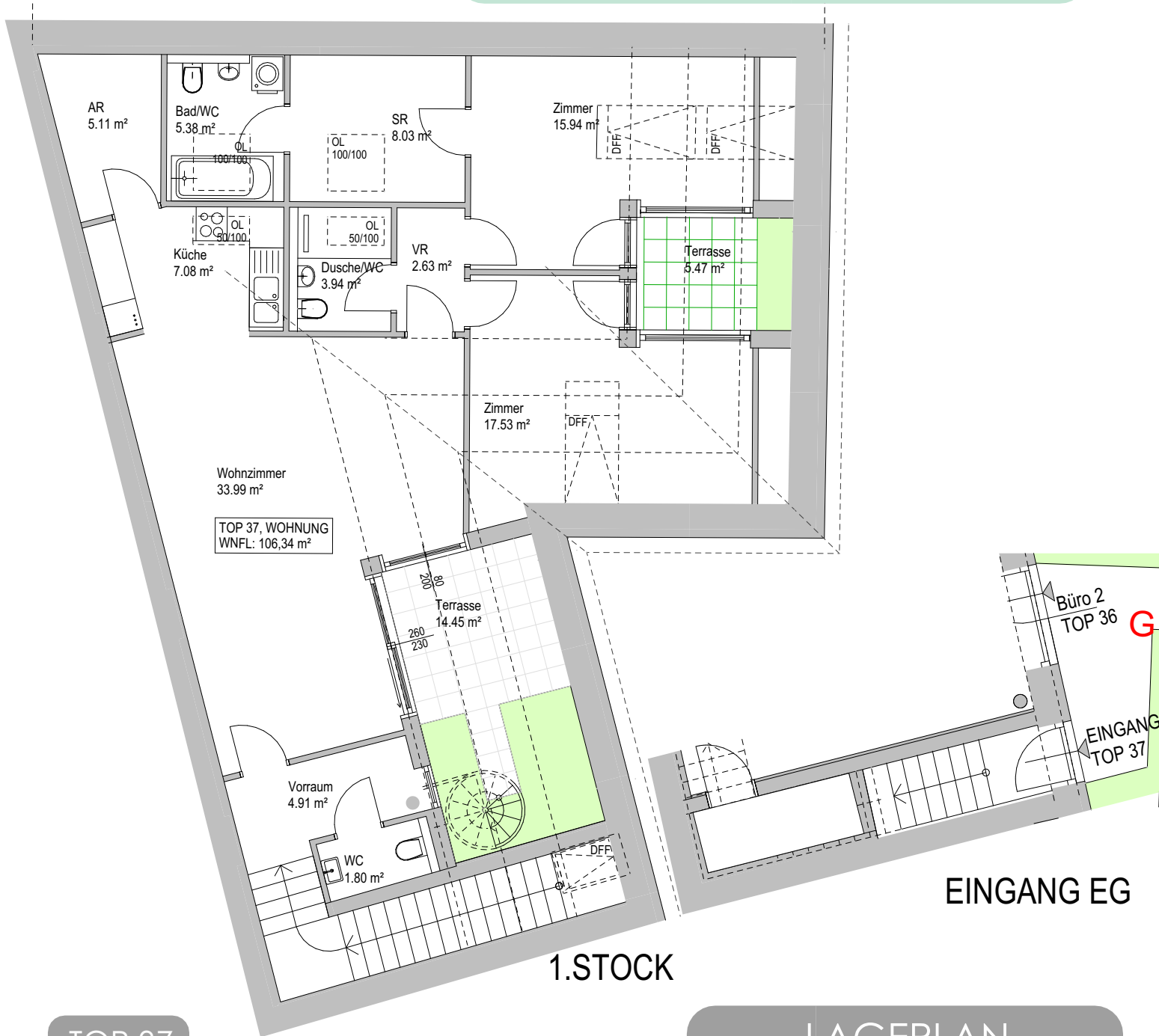
AR	2,05 m <sup>2</sup>
TEEKÜCHE	4,44 m <sup>2</sup>
BÜRO	31,76 m <sup>2</sup>
WC	1,59 m <sup>2</sup>
WR	1,39 m <sup>2</sup>
<b>WNFL</b>	<b>41,23 m<sup>2</sup></b>

LAGEPLAN



# EIGENTUMSWOHNUNG

MARKHOFGASSE 2, 1030 WIEN



TOP 37

WNFL  
106,34 m<sup>2</sup>

WC	1,80 m <sup>2</sup>
VR	4,91 m <sup>2</sup>
WOZI	33,99 m <sup>2</sup>
ZIMMER	17,53 m <sup>2</sup>
ZIMMER	15,94 m <sup>2</sup>
VR	2,63 m <sup>2</sup>
DU	3,94 m <sup>2</sup>
SR	8,03 m <sup>2</sup>
KÜCHE	7,08 m <sup>2</sup>
BAD/WC	5,38 m <sup>2</sup>
AR	5,11 m <sup>2</sup>
TERRASSE	14,45 m <sup>2</sup>
TERRASSE	5,47 m <sup>2</sup>

LAGEPLAN

