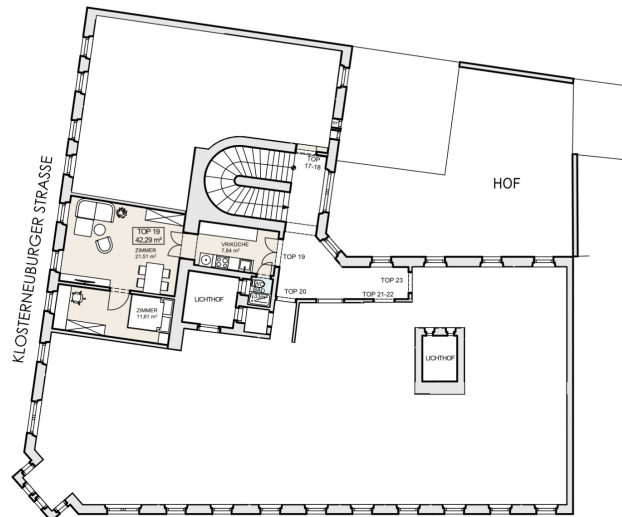


2.STOCK



2.STOCK
LAGEPLAN 1:500

2.STOCK

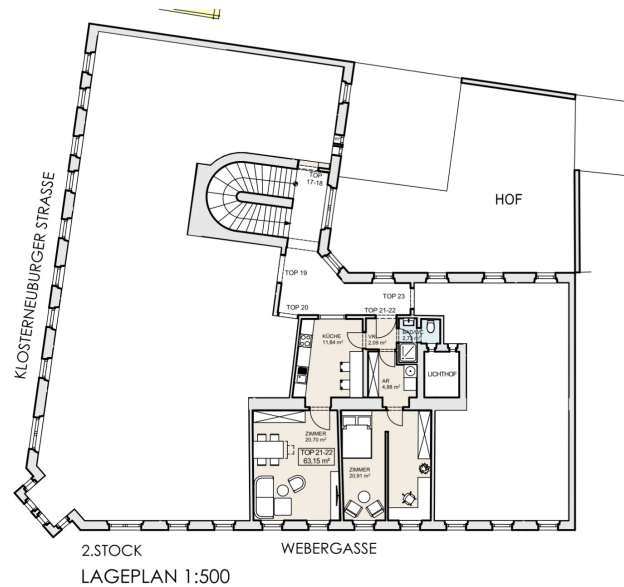
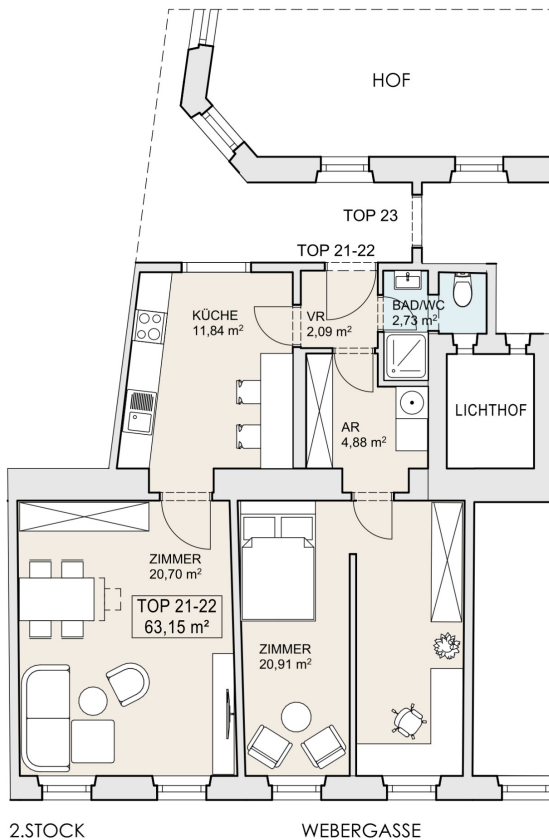
TOP 19
42,29 m²

VORABZUG

KLOSTERNEUBURGER STRASSE 30
1200 WIEN



GRUNDRISS 1/100

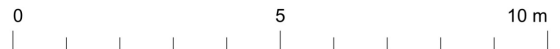


2.STOCK

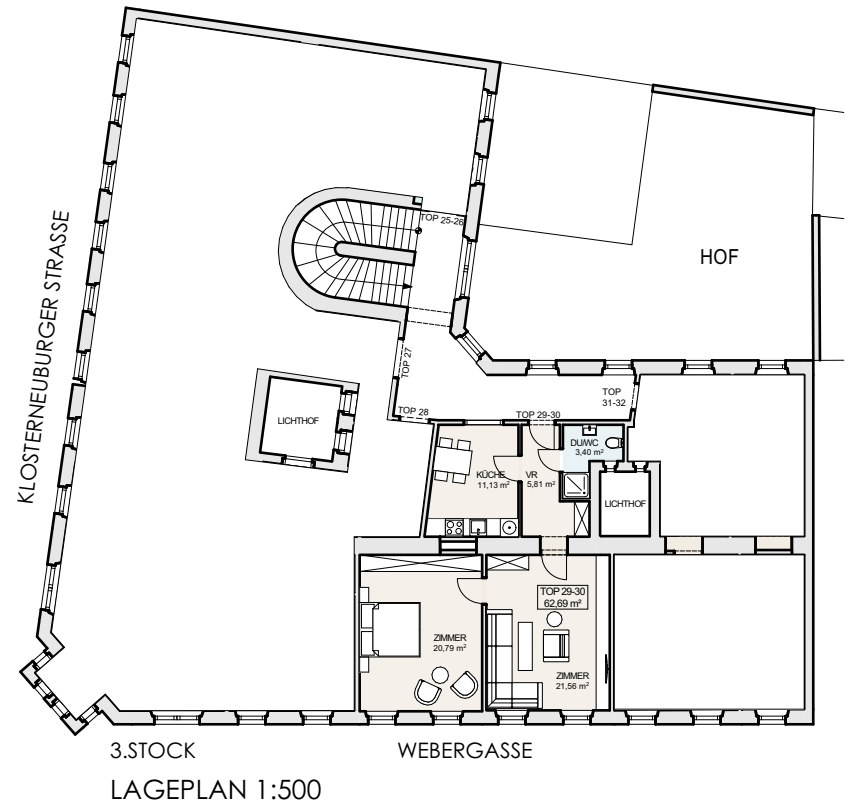
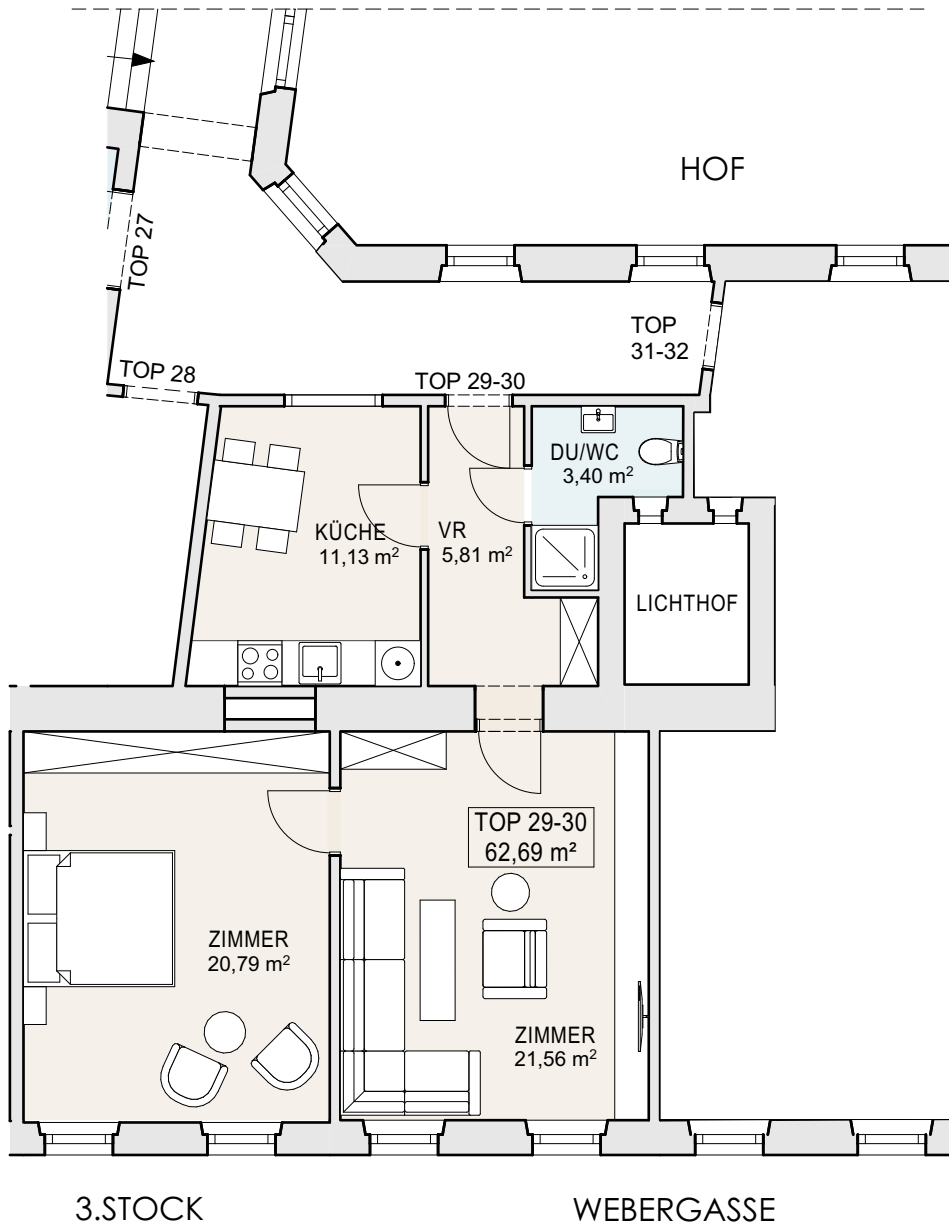
TOP 21-22
63,15 m²

VORABZUG

KLOSTERNEUBURGER STRASSE 30
1200 WIEN



GRUNDRISS 1/100

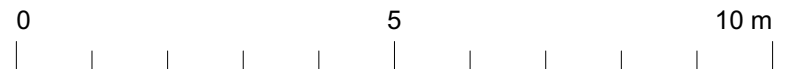
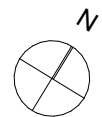


3. STOCK

TOP 29-30
62,69 m²

VORABZUG

KLOSTERNEUBURGER STRASSE 30
1200 WIEN



GRUNDRISS 1/100