

TOP-18 3.Obergeschoss

Wohnnutzfläche 3.OG: 123,09 m²

Gesamtfläche: 123,09 m²

Terrassenfläche: 15,36 m²
Kellerabteil: 8,74 m²

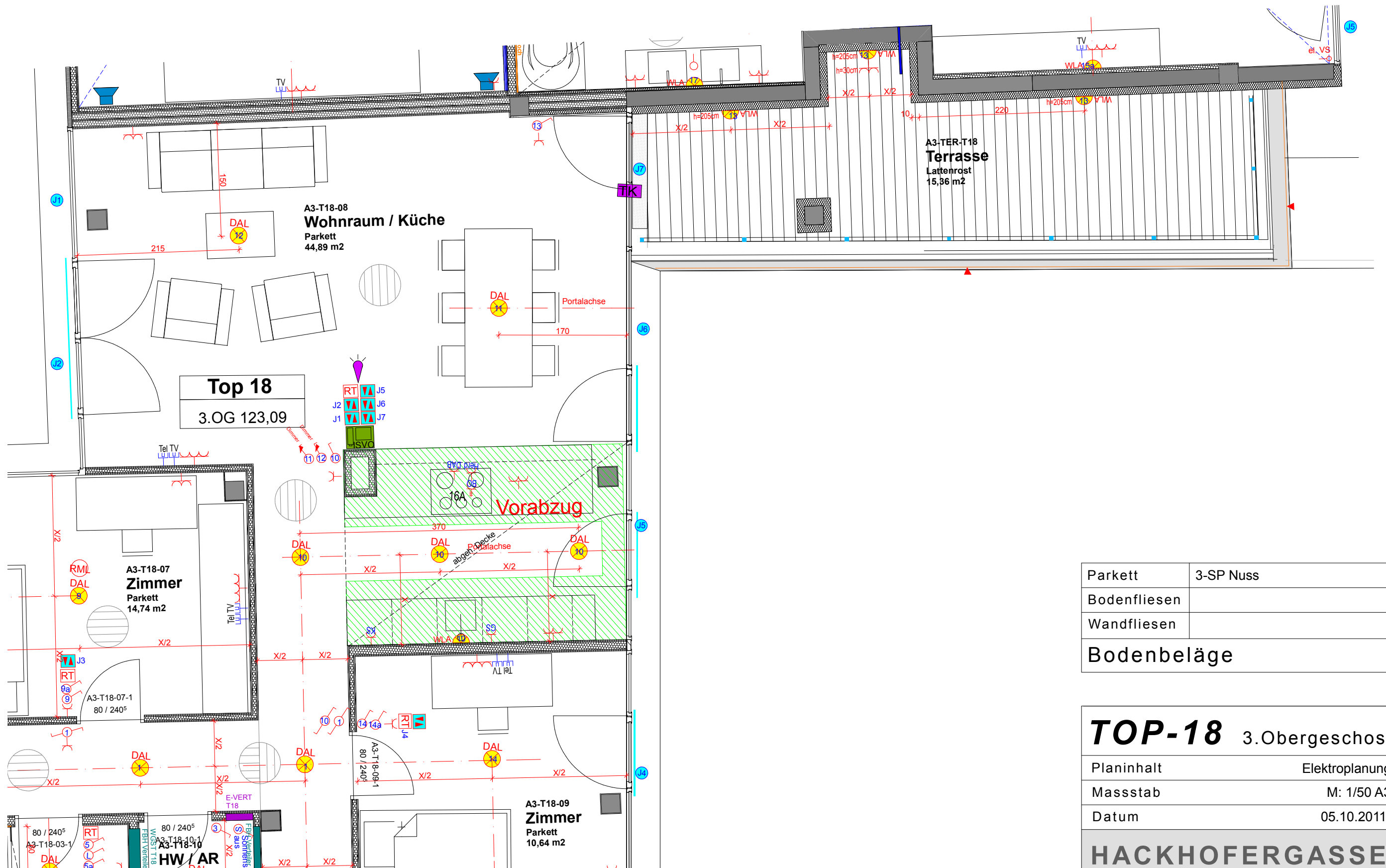
Allgemeine Gartenfläche / Kinderspielplatz
Garagenstellplätze

Planinhalt Grundriss

Massstab M: 1/100 A3

Datum 14.10.2011

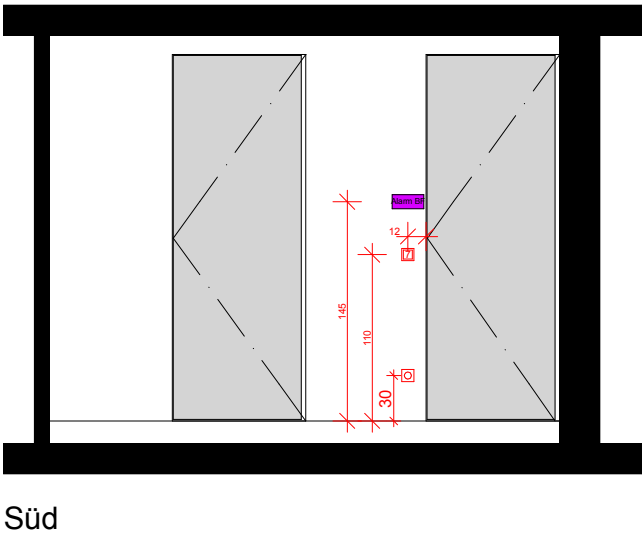
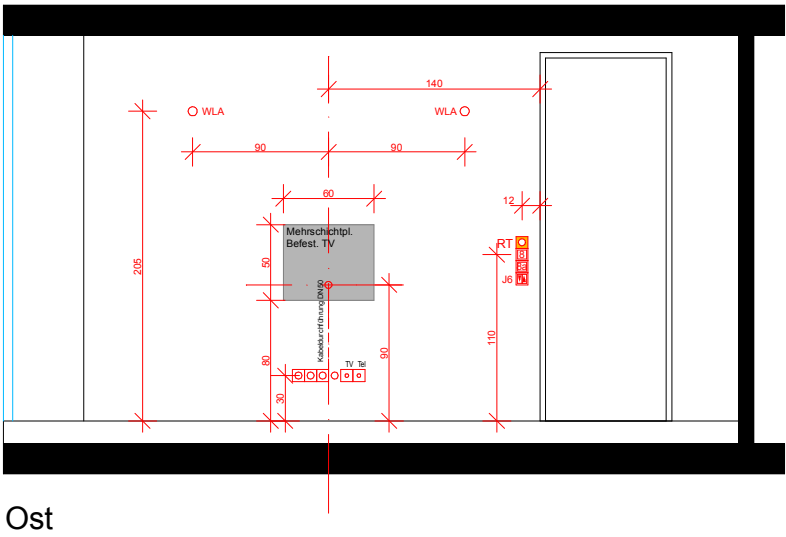
HACKHOFERGASSE
Hackhofergasse 13, A-1190 Wien



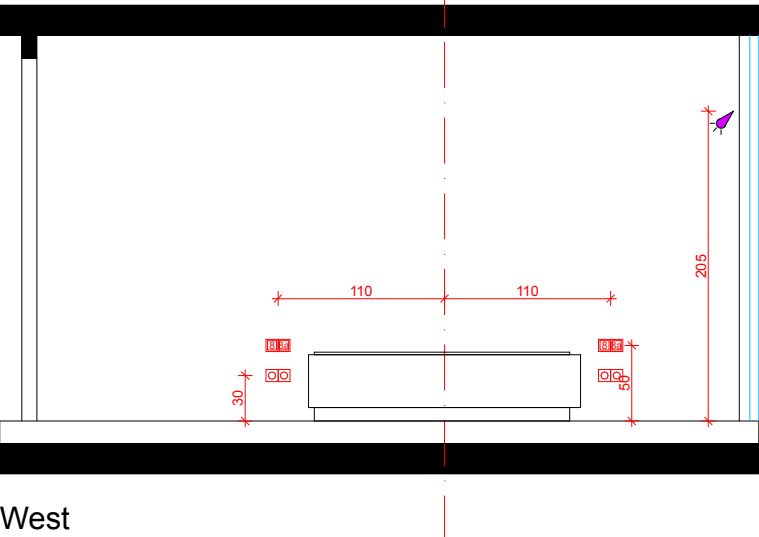
| | |
|--------------|-----------|
| Parkett | 3-SP Nuss |
| Bodenfliesen | |
| Wandfliesen | |
| Bodenbeläge | |

| | |
|---|----------------|
| TOP-18 3.Obergeschoss | |
| Planinhalt | Elektroplanung |
| Masstab | M: 1/50 A3 |
| Datum | 05.10.2011 |
| HACKHOFERGASSE Hackhofergasse 13, A-1190 Wien | |

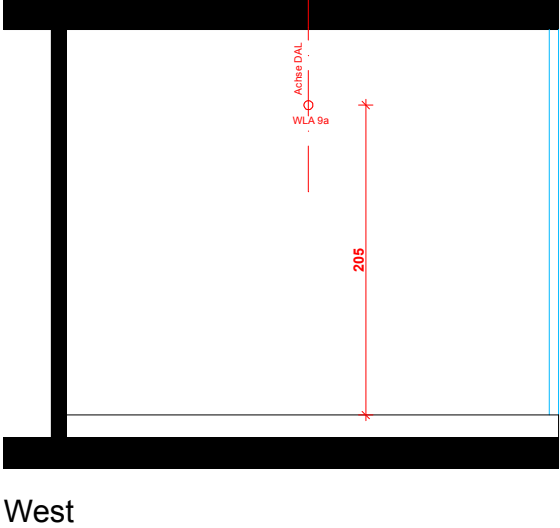
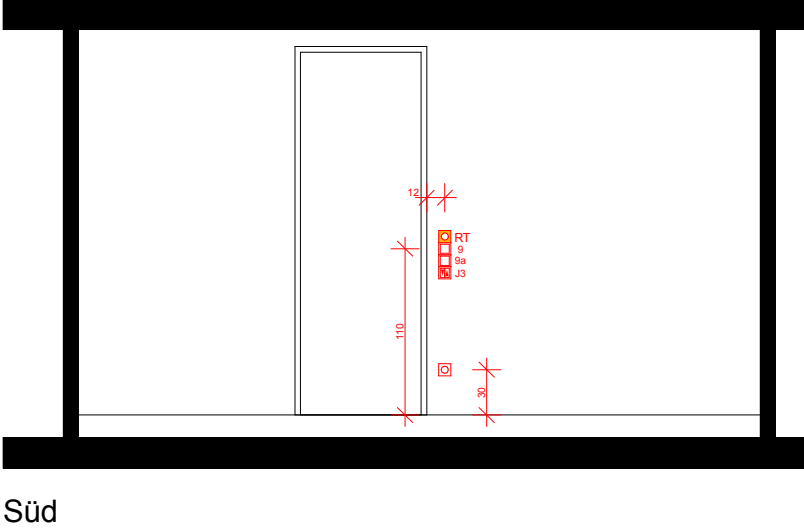
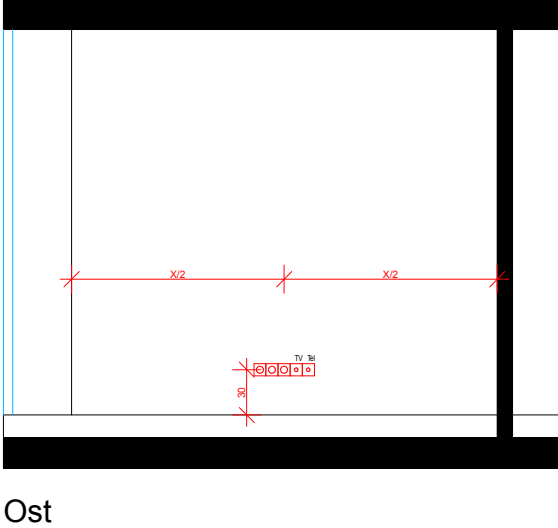
A3-T18-06 Zimmer



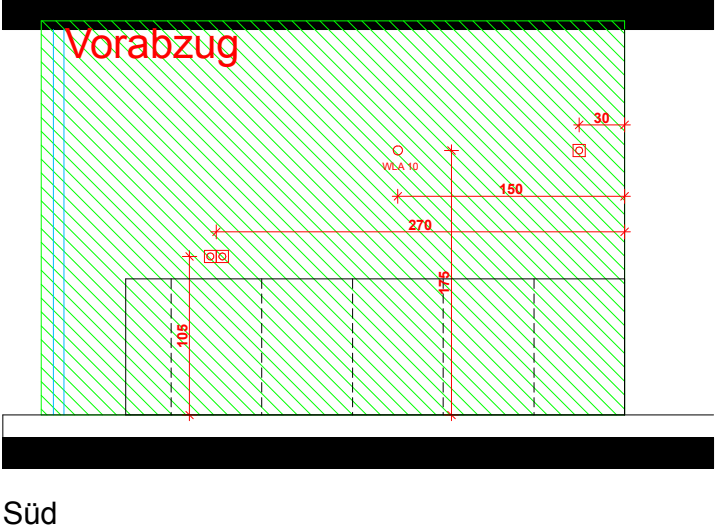
B3-T21-04 Zimmer



A3-T18-07 Zimmer



A3-T18-08 Küche



| | |
|---|--------------------|
| TOP-18 3.Obergeschoss | |
| Planinhalt | Wandabwicklungen 1 |
| Massstab | M: 1/50 A3 |
| Datum | 05.10.2011 |
| HACKHOFERGASSE Hackhofergasse 13, A-1190 Wien | |

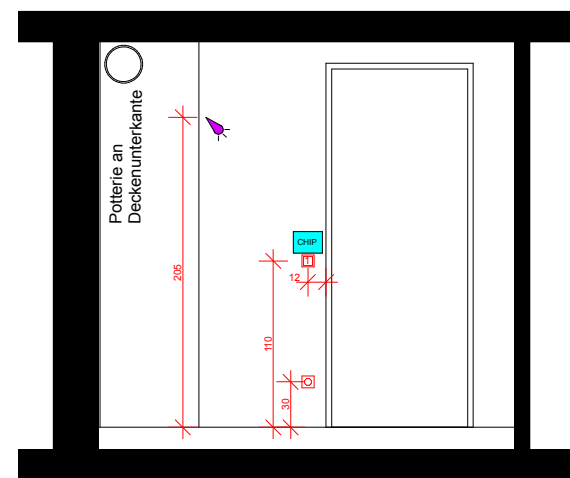
Technical drawing of a wall section showing two windows. The drawing includes a floor line, a ceiling line, and vertical lines for the window frames. Dimensions are indicated with red lines and numbers.

- Left window: width 80, height 30.
- Right window: width 40, height 110.

| | | | | | |
|--|--|--|--|--|--|
| | | | | | |
|--|--|--|--|--|--|

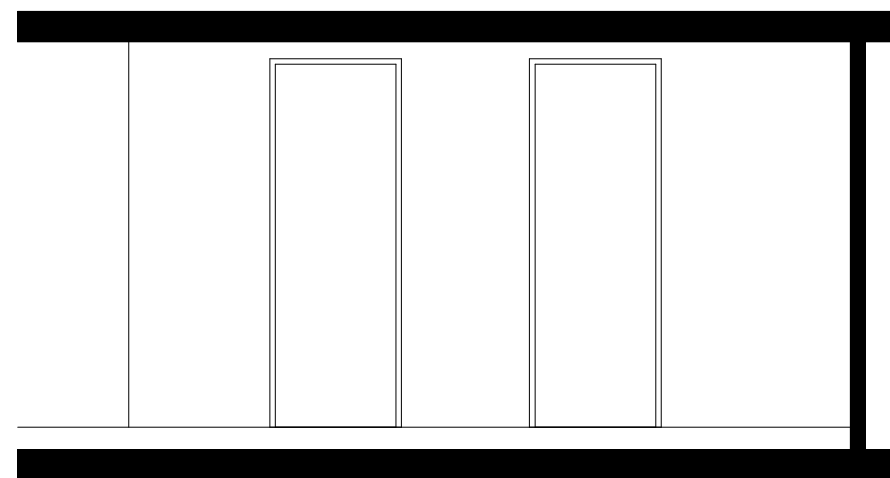
Technical drawing of a kitchen layout, side view. The drawing shows a green hatched area labeled "abgeh. Decke" (removable ceiling) and "Vorabzug" (hood). Dimensions include 30, 110, 12, 205, and 205. A red arrow points to the right.

HACKHOFERGASSE
Hackhofergasse 13, A-1190 Wien

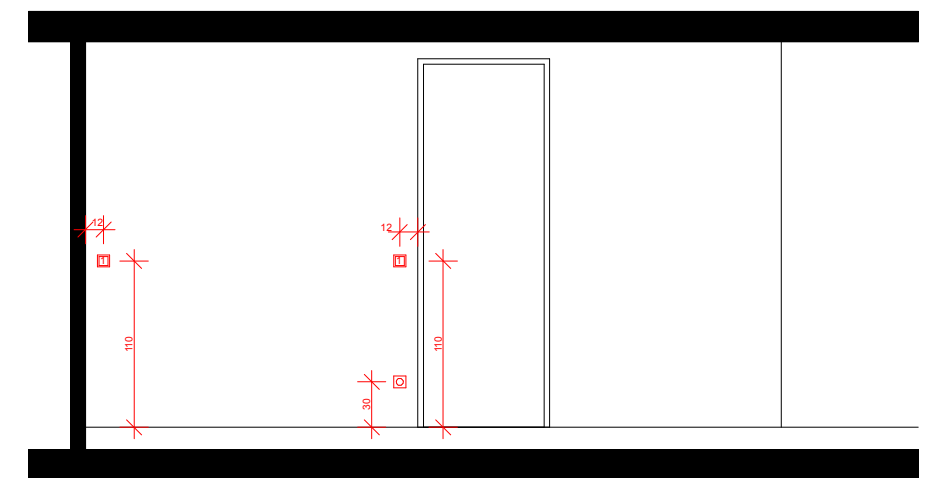


Süd

A3-T18-01 Gang

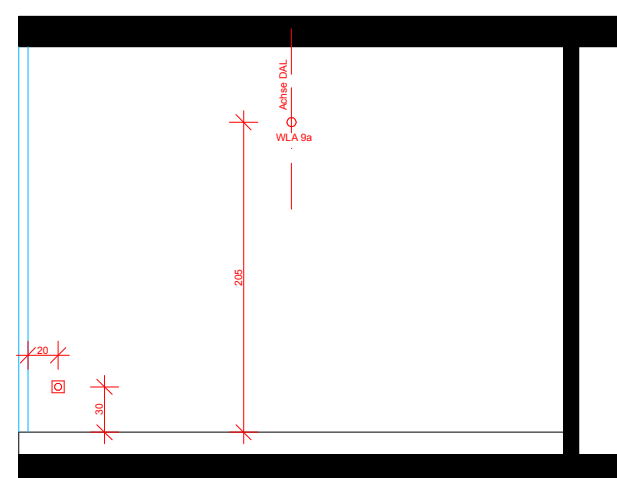


Süd

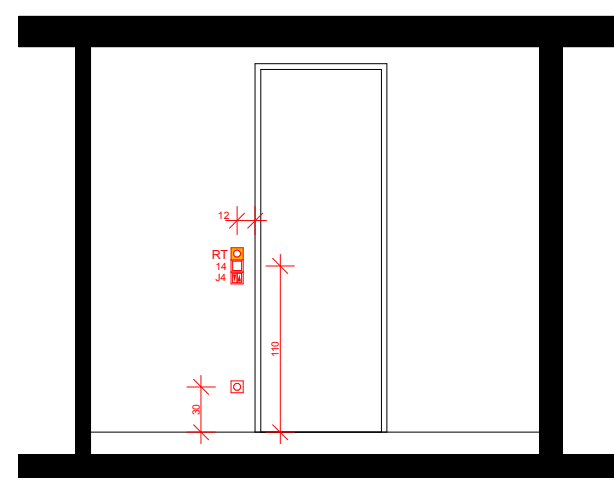


Nord

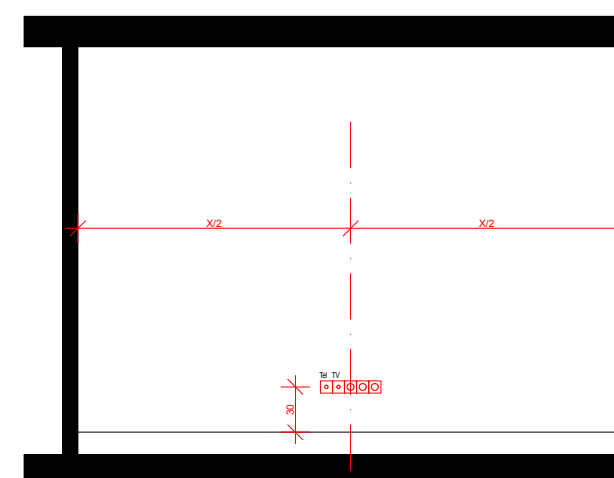
A3-T18-09 Zimmer



Süd



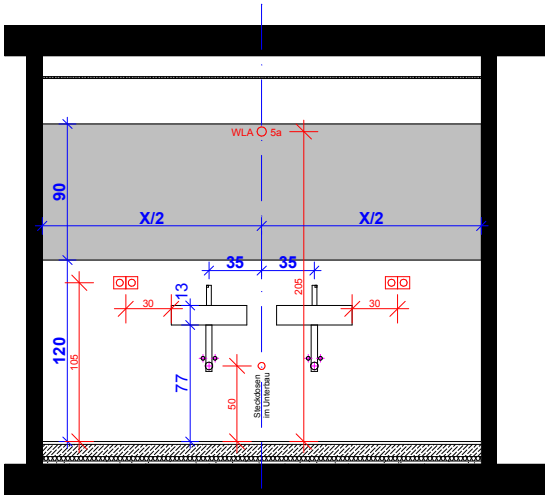
West



Nord

| | |
|---|--------------------|
| TOP-18 3.Obergeschoss | |
| Planinhalt | Wandabwicklungen 3 |
| Massstab | M: 1/50 A3 |
| Datum | 05.10.2011 |
| HACKHOFERGASSE Hackhofergasse 13, A-1190 Wien | |

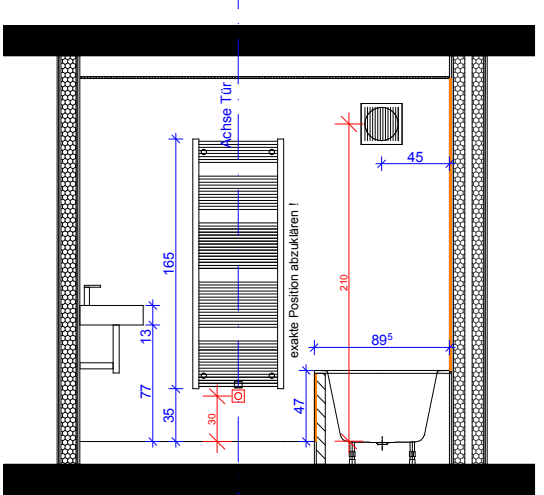
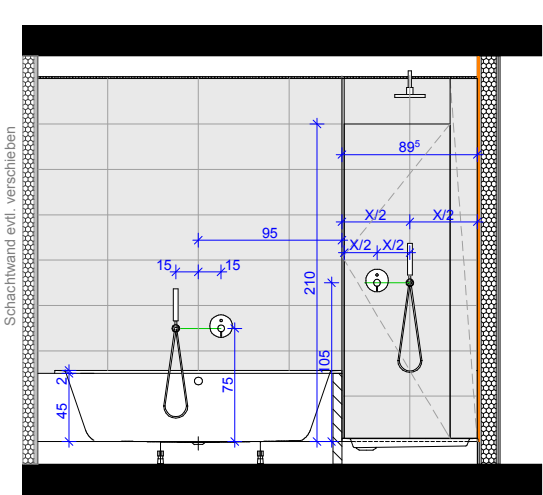
A3-T18-03 Bad



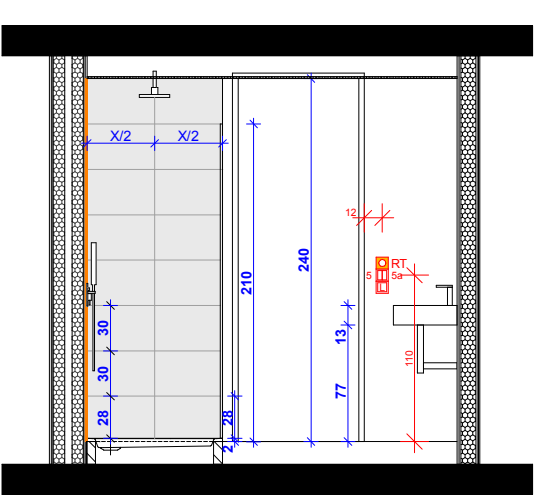
Ost



West

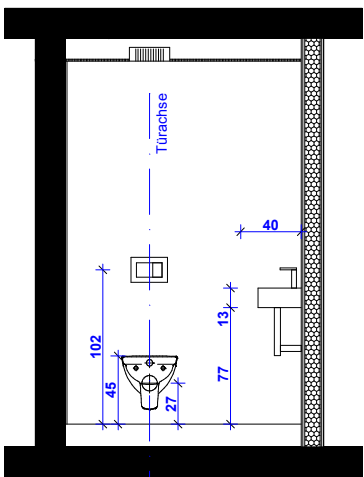


Süd

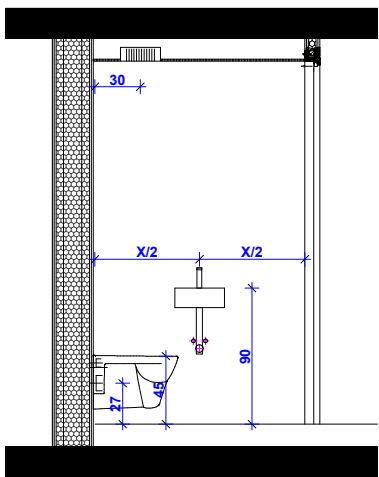


Nord

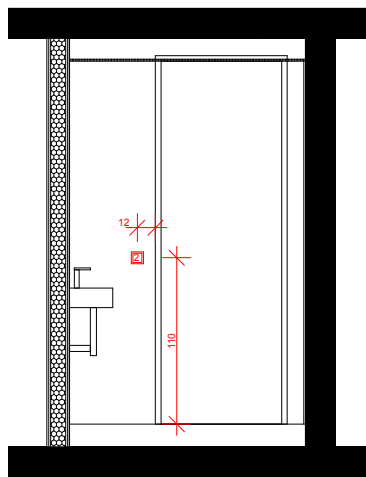
A3-T18-02 WC



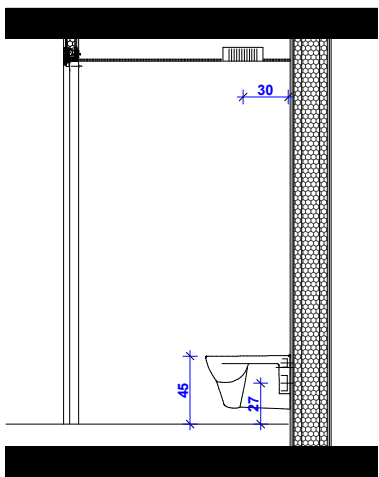
West



Nord

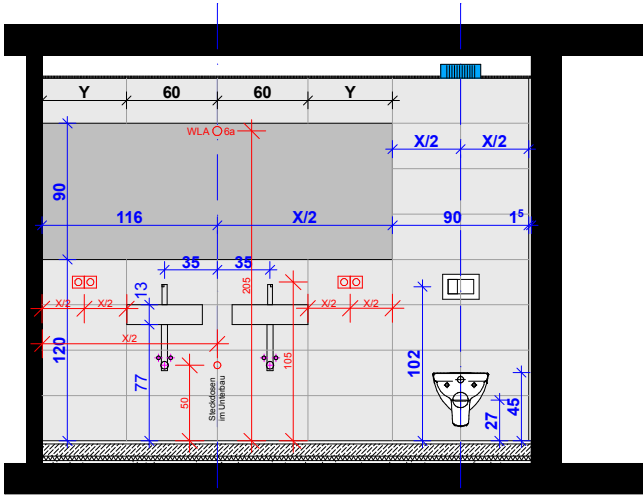


Ost

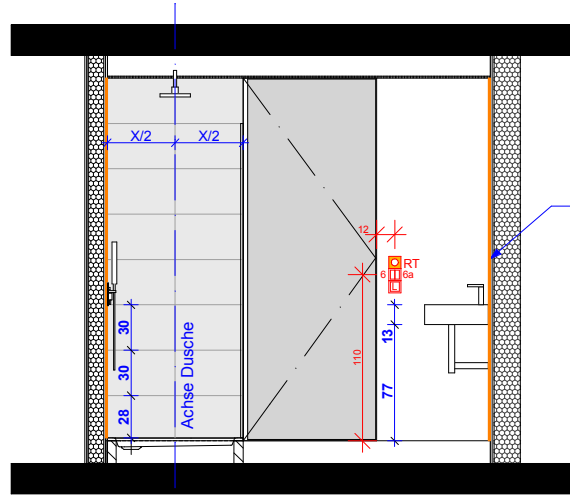


Süd

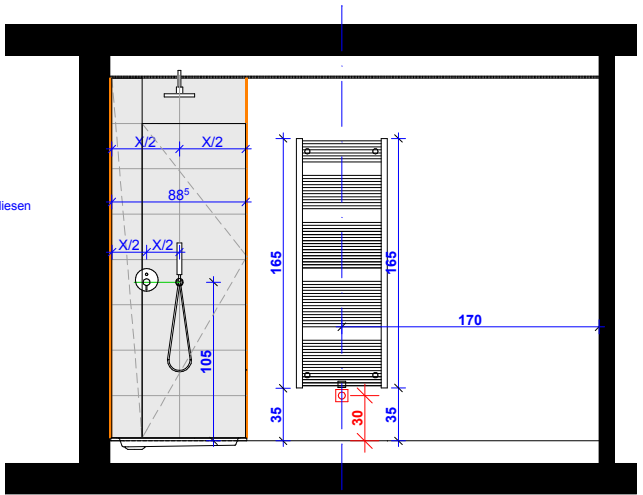
A3-T18-04 Bad



Ost



Nord



West

TOP-18 3.Obergeschoss

Planinhalt Wandabwicklungen 4

Massstab M: 1/50 A3

Datum 05.10.2011

HACKHOFERGASSE
Hackhofergasse 13, A-1190 Wien