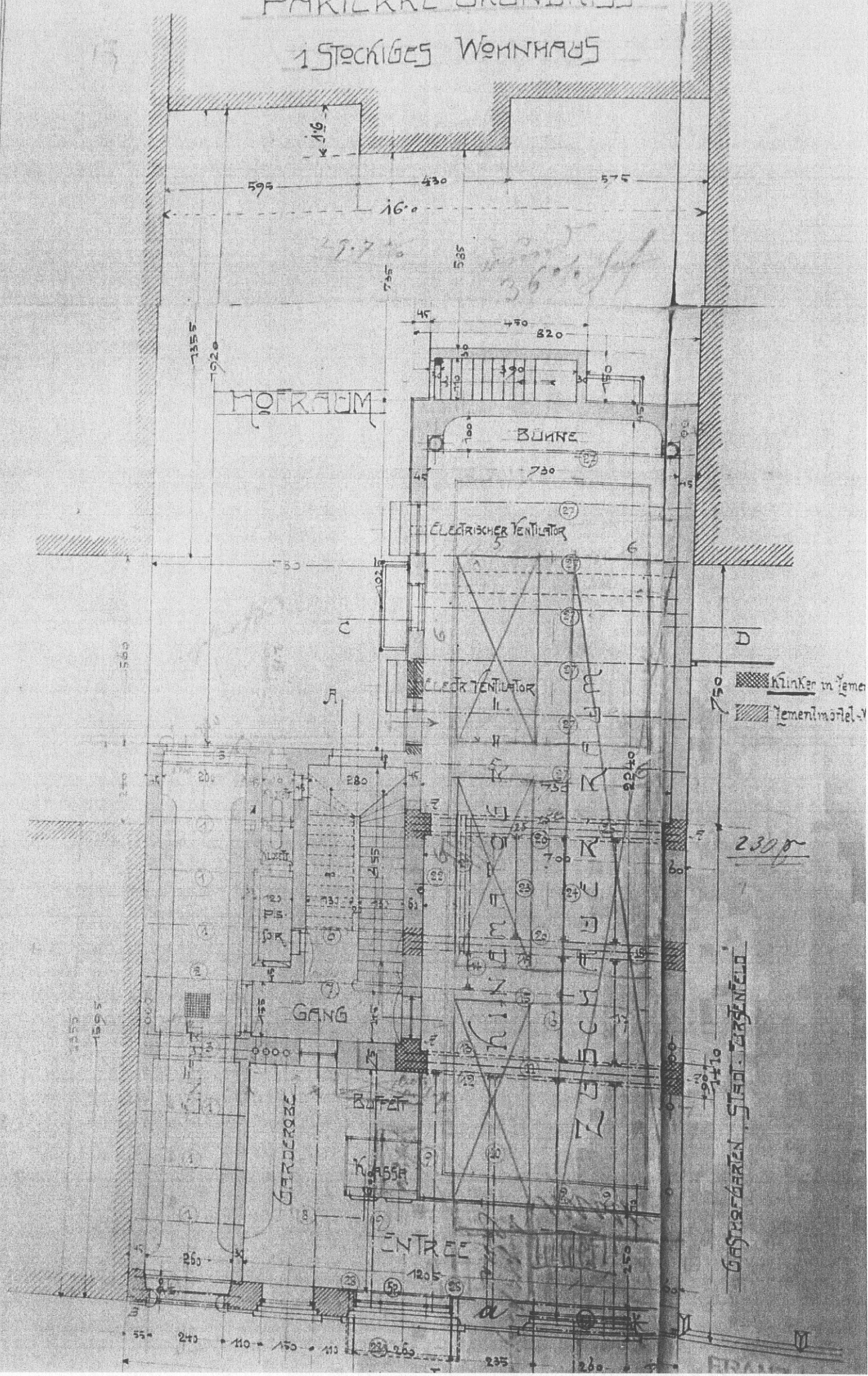
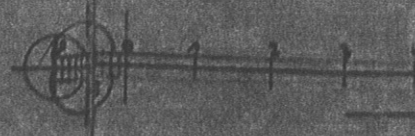
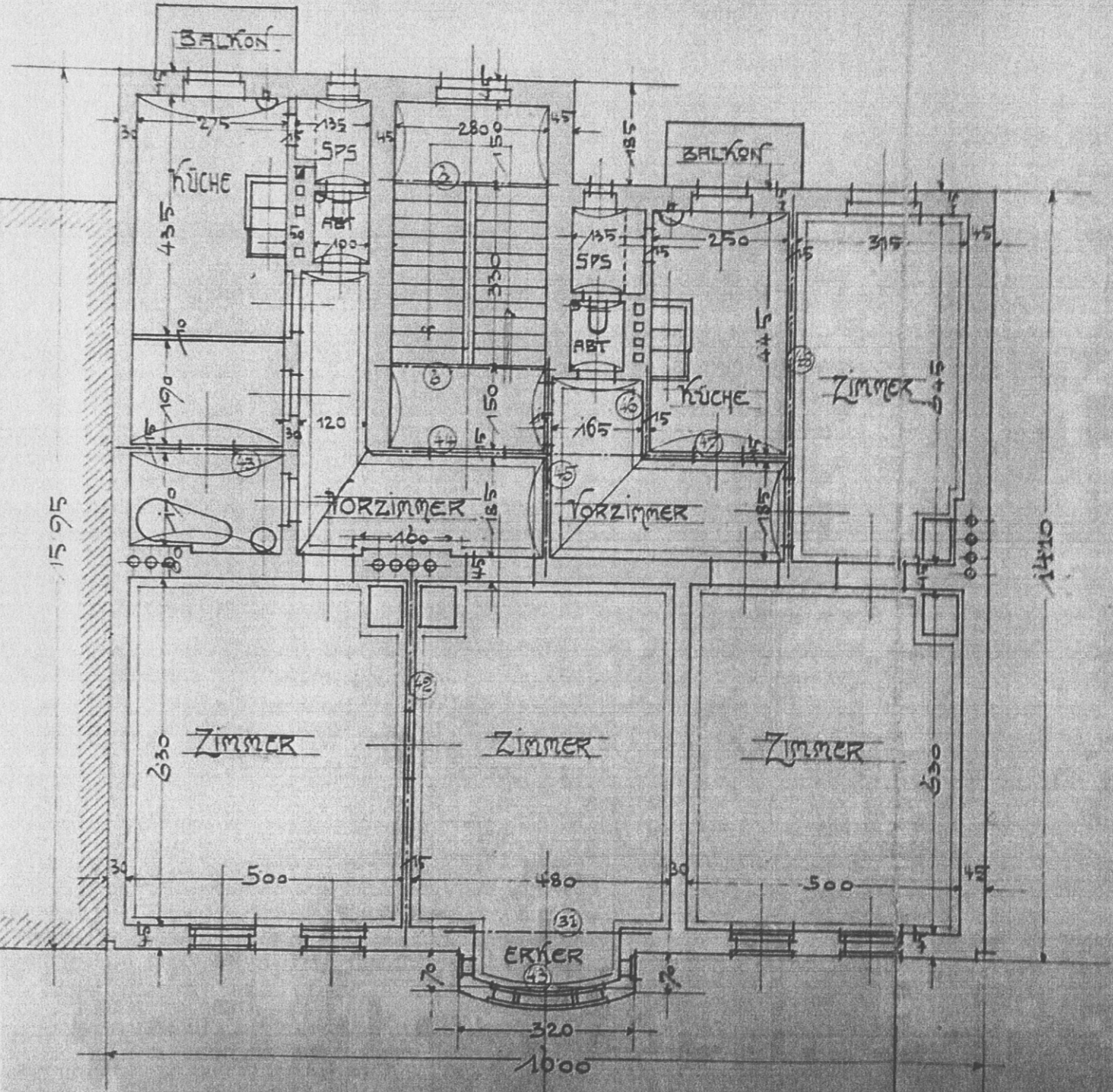


PARTERRE-GRUNDRISS

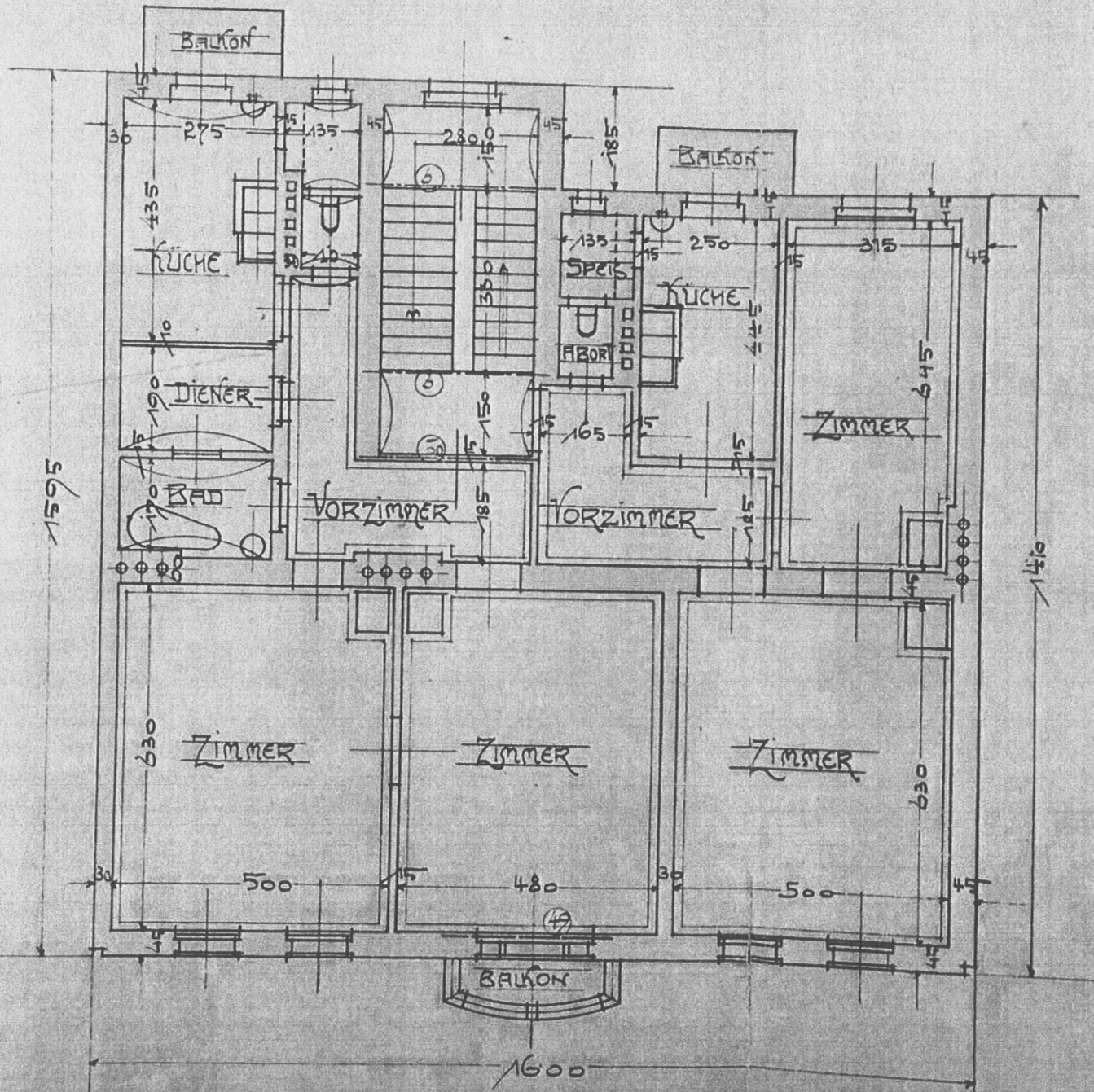
1STÖCKIGES WOHNHHAUS



2. Stock



3. Stock

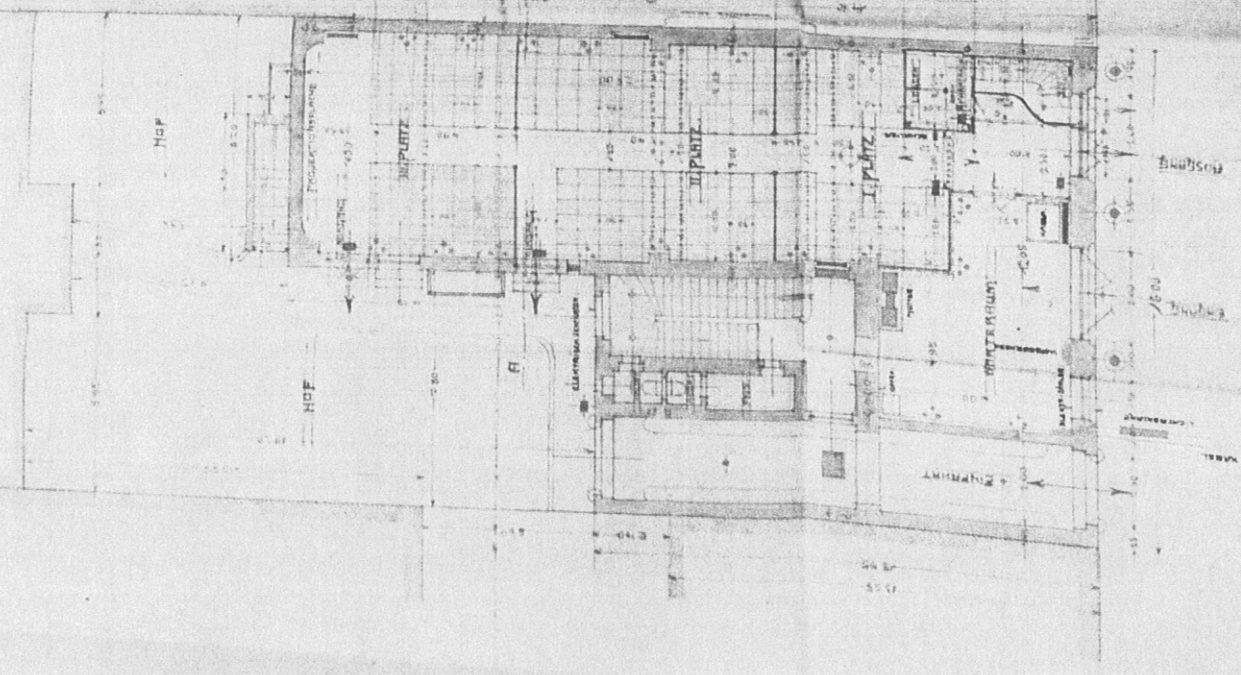


FRANZ PFILLER JUN.
 STADT-MAURERMEISTER
 GEB. KLEINGASSE 10

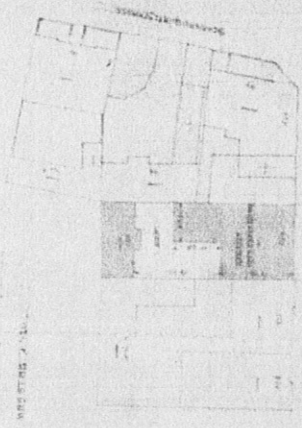
Franz Pfiller jun.
Joh. Huber
Abt. Zimmermeister

WÄRMELUMFTUNG DES LICHTSPELTHEATERS JAKOMINIGASSE 704
BESITZER HERR OSKAR BIERKE

PARTERRE GRUNDRISS
1:200

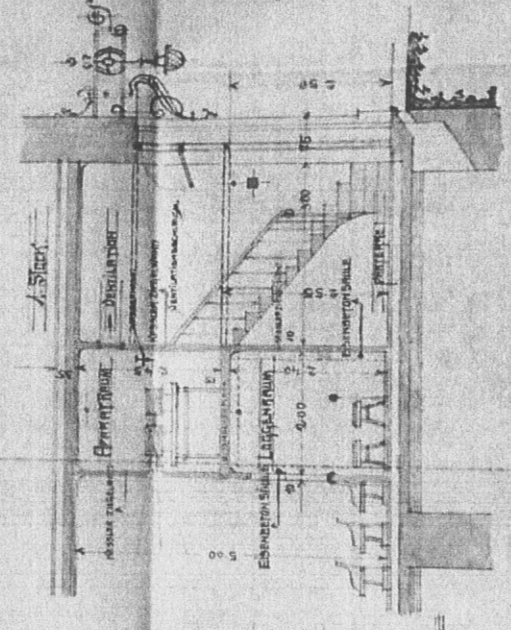


SITUATION



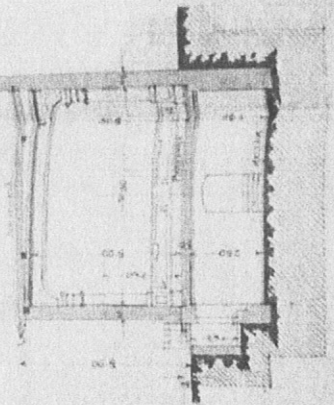
- LEGENDE:
- ▲ ELEKTROGENIESSCHULE
 - KLEINE ELEKTROLABOR
 - ELEKTROLABOR
 - ELEKTROGENIESSCHULE
 - NOTIZEN

SCHNITT C D 1:50

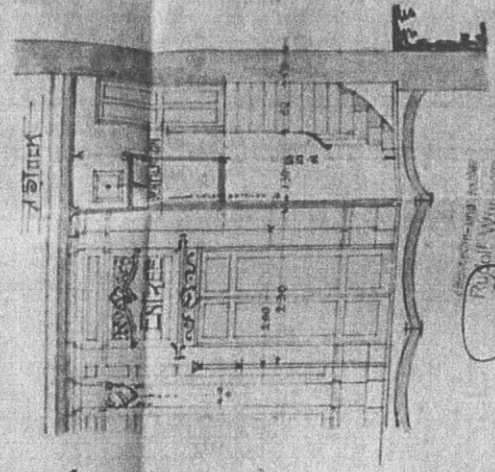


BRUNNEN IM APRIL 1913

SCHNITT A B 1:50



SCHNITT E F 1:50



Gezeichnet von
Rudolf Witt
Architekt
BRUNNEN
Kunsthochschule
Leipzig

Plan
1:200
1913